

think thin SNOWBOARDS city

SNOW BOARDS
BINDINGS
BOOTS

WINTER 26/27



RIDER DRIVEN. BUILT WITHOUT COMPROMISE

After 30 years of rider-driven snowboarding, our 31st is a year of firsts. ThirtyTwo is ducking the rope with the introduction of our first snowboard line—boards built with the same passion behind our boots, outerwear, and bindings.

ThirtyTwo Snowboards are performance-driven and shaped by the needs and attitudes of our team. Six core demands lead the way: unique shapes, sturdier edges, bold graphics, true camber, precision flex, and a faster base.

With four collections built around distinct riding styles, there's something for every rider who lives for days on the hill. Head-to-toe is now ThirtyTwo.

**BUILT AT SWS WITH NIDECKER GROUP
EXCLUSIVE QC AND THIRTYTWO TECHNOLOGIES**



31 YEARS IN THE MAKING

12 CUSTOM SHAPES

108 SIZES

86 NEXT -GEN MOLDS

CUSTOM CARBON CONSTRUCTION

RIDER DRIVEN SHAPES

INDUSTRY LEADING MATERIALS

SINTERED BASE

8.1M MOLECULAR MASS

EPOXY RESIN

27% BIO-SOURCED

ABS SIDEWALLS

MADE IN AUSTRIA

DURA-TOPSHEET

MADE IN AUSTRIA

WEND WAX

NP PERFORMANCE WAX

FACTORY TUNED

DE-TUNED & READY TO SHRED

ULTIMATE FLEX

BROKE-IN AT FACTORY

MERCHANDISING OVERVIEW

2026

THE THIRTYTWO EXCLUSIVE WAY
TO TALK ABOUT SNOWBOARDS

DESTROY COLLECTION

A board that's loyal to the steel. True twins designed for park laps with a flex that snaps back and construction that goes hard every time.

SHRED COLLECTION

The mountain is your skatepark--ride it like one. All-mountain directional twin shapes built for every transition, lip, side hit, and roller. Regular or switch, let it EAT. - SFD

Slash COLLECTION

Sidecountry snow surfing for the freerider who lives for drawn-out turns and the rooster tail that follows. Not all who wander are lost--they're just chasing better lines.

COLLECTION

Where design hits the freezing point. ThirtyTwo's R&D division for hybrid styles and progressive shapes.

Lightwood

Hardwood

Strongest Wood

Strongest / Most Responsive

Lightest Board Feel

10mm POPLAR
20mm PAULOWNIA + BAMBOO RAILS



20mm POPLAR
20mm PAULOWNIA + BAMBOO CENTER



20mm POPLAR
20mm PAULOWNIA



10mm POPLAR
20mm PAULOWNIA



5mm POPLAR
20mm PAULOWNIA





CARBON STRINGER



FULL CARBON

Strongest / Most Responsive

Lightest Board Feel

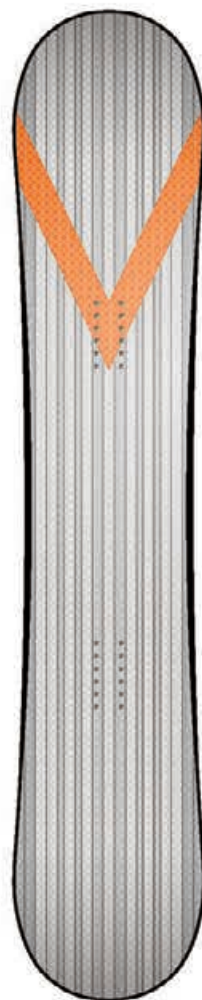
Twin Carbon Boost Stringers



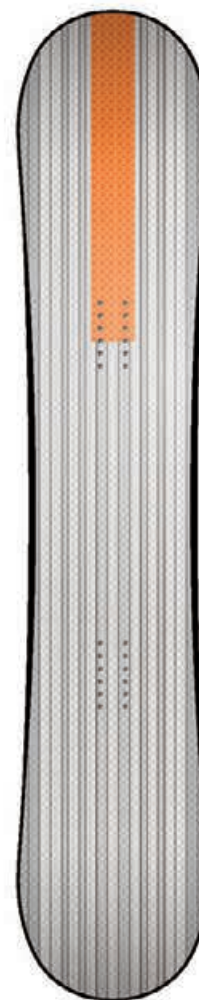
Twin Power Carbon Stringers



Dir. Carbon Boost Stringers



Dir. Power Carbon Stringers



Full carbon Lay-up





COLD WORLD

FORGIVING FLEX TWIN BOARD
DESIGNED FOR JIBBING ENDLESS PARK LAPS

A true park weapon, the Cold world is the best choice for your entry level rider or advanced rider that prefers a softer flex. The top sheet is treated with an eye catching metal flake that embodies the hot lap potential with the Cold world under your feet.

BEHIND THE ART: JOE KING

A Long Beach-based artist with deep roots in street-wear, Joe King's style is stitched into the fabric of skate, fashion, and pop culture.

SHAPE TECH +

SHAPE: Twin Tip

NOSE & TAIL RISE: Park Kick

SIDECUT: Progressive Five-Radius Blend

SET BACK: Centered

TAPER: No Taper

TERRAIN +

ALL MOUNTAIN 8/10

PARK 10/10

POWDER 4/10

FEATURES +

100% POPLAR

Biax Fiberglass

Durable Extruded Base

Impact Shield Topsheet

Hardened Steel Edge

RailGuard Sidewalls

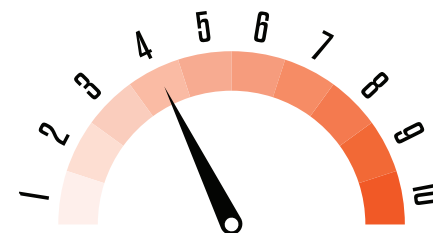
Fast Wend Natural Wax

30% Bio Epoxy Resin



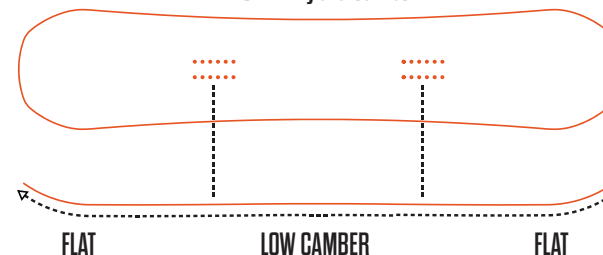
TOPSHEET

BASE



FRIENDLY & PLAYFUL

PROFILE: Hybrid Camber



100% POPLAR

SIZE	WAIST WIDTH	SIDECUT	EFFECTIVE EDGE
146	25.0	7/6.6/6.2/6.6/7	114.6
149	25.2	7.2/6.8/6.4/6.8/7.2	117.2
152	25.5	7.4/7/6.6/7/7.4	119.6
155	25.8	7.6/7.2/6.8/7.2/7.6	122
157	26.0	7.7/7.3/6.9/7.3/7.7	123.6
158 W	26.6	7.8/7.4/7/7.4/7.8	124.4
159	26.2	7.8/7.4/7/7.4/7.8	125.2



T32M

TEAM DRIVEN TWIN BOARD WITH
PERFECT POP FOR FREESTYLE RIDING

The workhorse of the line, The T32M is engineered to meet the need of park rider looking for a higher level of response and pop. Jumping, jibbing, ripping, this is the board you want under your feet.

BEHIND THE ART: MITCH DELANEY

After nearly a decade of sharpening his teeth in Volcom's iconic art department, New Englander Mitch Delaney found his way into the creative core of snowboarding with ThirtyTwo as Art Director.

* SHAPE TECH +

SHAPE: Twin Tip

NOSE & TAIL RISE: Park Kick

SIDECUT: Progressive Five-Radius Blend

SET BACK: Centered

TAPER: No Taper

* TERRAIN +

ALL MOUNTAIN 8/10
|||||

PARK 10/10
|||||

POWDER 5/10
|||||

* FEATURES +

Twin Power Carbon Stringer

20mm POPLAR / 20mm PAULOWNIA

Triax Fiberglass

Premium Sintered Base 8.4M

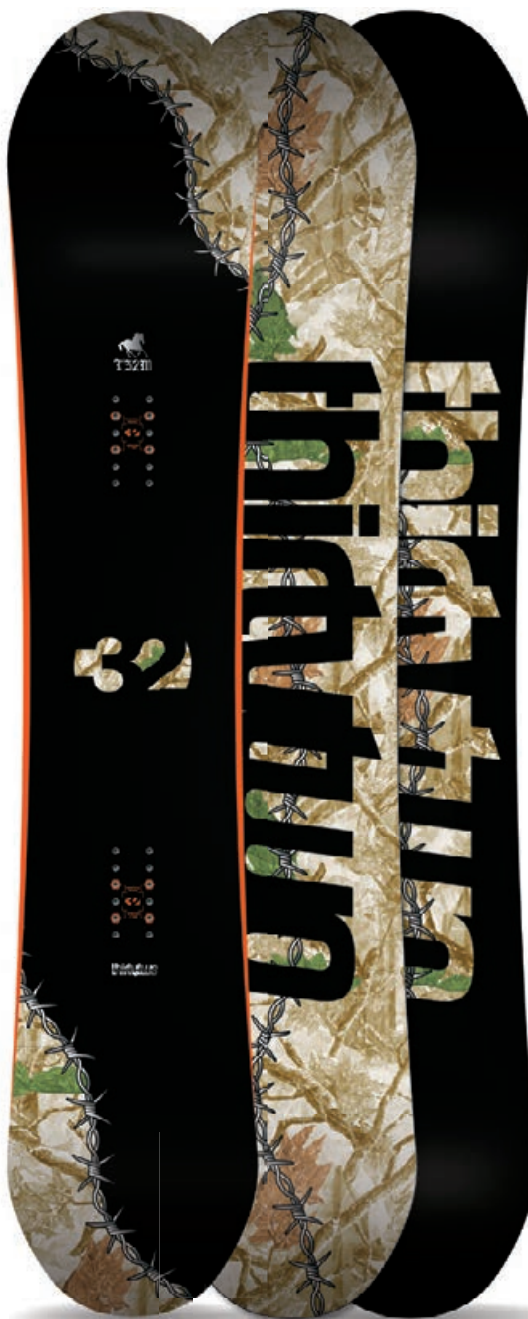
Impact Shield Topsheet

Hardened Steel Edge

RailGuard Sidewalls

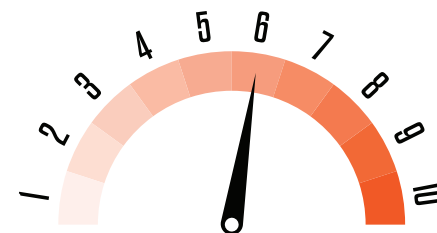
Fast Wend Natural Wax

30% Bio Epoxy Resin



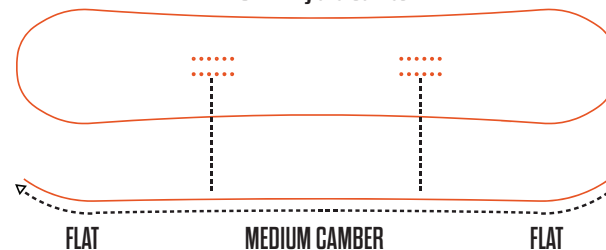
TOPSHEET

*FLIP FLOP BASE



HAPPY MEDIUM

PROFILE: Hybrid Camber



Twin Power Carbon Stringers



20mm POPLAR / 20mm PAULOWNIA

SIZE	WAIST WIDTH	SIDECUT	EFFECTIVE EDGE
148	24.4	8/7.6/7.2/7.6/8	114.6
151	24.7	8.2/7.8/7.4/7.8/8.2	117
154	25	8.4/8/7.6/8/8.4	119.4
156	25.2	8.5/8.1/7.7/8.1/8.5	121
157 W	26.1	8.6/8.2/7.8/8.2/8.6	122
158	25.4	8.6/8.2/7.8/8.2/8.6	122.6
160 W	26.3	8.7/8.3/7.9/8.3/8.7	124.6
161	25.7	8.8/8.4/8/8.4/8.8	125



MIDDLE EARTH

RETRO SHAPE AND PLAYFUL FLEX FOR
CREATIVE PARK SNOWBOARDING

The Middle Earth's retro popsicle shape is a blast from the past with technology from the future. The twin carbon boost stringers delivers a responsive pop while the bamboo paulownia core offers a comfortable medium flex.

BEHIND THE ART: KEVIN EMERSON

New England-born and NYC-based, Kevin Emerson is making waves in the city's fashion and skate scenes. Through his brand, Emersin Studio, he experiments with wash-and-dye techniques layered with hand-drawn and painted illustrations—resulting in one-of-a-kind artwork.

* SHAPE TECH +

SHAPE: Twin Tip

NOSE & TAIL RISE: All-Terrain Kick

SIDECUT: Progressive Five-Radius Blend

SET BACK: Centered

TAPER: No Taper

* TERRAIN +

ALL MOUNTAIN 8/10

PARK 10/10

POWDER 6/10

* FEATURES +

Twin Carbon Boost Stringers

10mm POPLAR / 20mm PAULOWNIA

+ BAMBOO RAILS

Biax Fiberglass

Premium Sintered Base 8,4M

Impact Shield Topsheet

Hardened Steel Edge

RailGuard Sidewalls

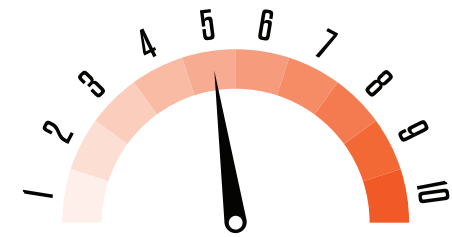
Fast Wend Natural Wax

30% Bio Epoxy Resin



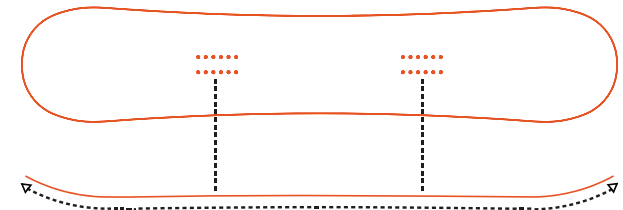
TOPSHEET

BASE



HAPPY MEDIUM

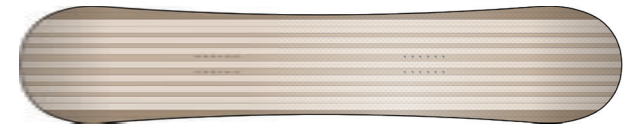
PROFILE: True Medium Camber



MEDIUM CAMBER



Twin Carbon Boost Stringers



10mm POPLAR / 20mm PAULOWNIA + BAMBOO RAILS

SIZE	WAIST WIDTH	SIDECUT	EFFECTIVE EDGE
149	24.9	7.6/7.2/6.8/7.2/7.6	113.2
152	25.2	7.8/7.4/7.7/7.4/7.8	115.6
155	25.5	25.5	118
156	25.6	25.6	119
157	25.7	8.1/7.7/7.3/7.7/8.1	119.6
158 W	26.4	8.1/7.7/7.3/7.7/8.1	120.4
159	25.9	8.2/7.8/7.4/7.8/8.2	121.2



T32M CARBON

ENHANCED PERFORMANCE AND PARK PROGRESSION
WITH FULL CARBON CONSTRUCTION

Raw charging power is what you can expect from the T32M Carbon. The full Carbon top-sheet lay up provides a stiffer highly responsive park board. Ideal for jumping and going extra large on any terrain.

BEHIND THE ART: JOE KING

A Long Beach-based artist with deep roots in streetwear, Joe King's style is stitched into the fabric of skate, fashion, and pop culture.

* SHAPE TECH +

SHAPE: Twin Tip

NOSE & TAIL RISE: Park Kick

SIDECUT: Progressive Five-Radius Blend

SET BACK: Centered

TAPER: No Taper

* TERRAIN +

ALL MOUNTAIN 8/10

PARK 10/10

POWDER 5/10

* FEATURES +

Full Carbon Layup

10mm POPLAR / 20mm PAULOWNIA
+ BAMBOO RAILS

Premium Sintered Base 8,4M

Impact Shield Topsheet

Hardened Steel Edge

RailGuard Sidewalls

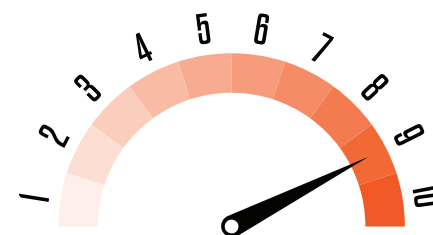
Fast Wend Natural Wax

30% Bio Epoxy Resin



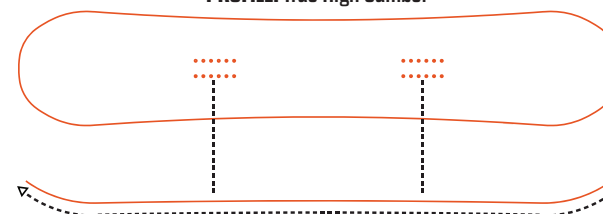
TOPSHEET

BASE



STIFF & POWERFUL

PROFILE: True High Camber



HIGH CAMBER



Full Carbon Layup



10mm POPLAR / 20mm PAULOWNIA + BAMBOO RAILS

SIZE	WAIST WIDTH	SIDECUT	EFFECTIVE EDGE
148	24.4	8/7.6/7.2/7.6/8	114.6
151	24.7	8.2/7.8/7.4/7.8/8.2	117
154	25	8.4/8/7.6/8/8.4	119.4
156	25.2	8.5/8.1/7.7/8.1/8.5	121
157 W	26.1	8.6/8.2/7.8/8.2/8.6	122
158	25.4	8.6/8.2/7.8/8.2/8.6	122.6
160 W	26.3	8.7/8.3/7.9/8.3/8.7	124.6
161	25.7	8.8/8.4/8/8.4/8.8	125



W's-GEMINI

A SOFT FLEXING FREESTYLE TWIN PROVIDING WOMEN RIDERS A FUN PARK EXPERIENCE

The Women's Gemini is the ideal board for park progression. Specifically engineered to fit the needs of advanced to entry level women riders looking for a soft and playful shred stick.

BEHIND THE ART: DELANEY RENEE

Delaney Renee is a Los Angeles-based tattoo artist whose work leans delicate in technique with fine-line execution, but dark in subject matter—bringing a quiet intensity to the contrast that's become her signature.

* SHAPE TECH +

SHAPE: Twin Tip

NOSE & TAIL RISE: Park Kick

SIDECUT: Progressive Five-Radius Blend

SET BACK: Centered

TAPER: No Taper

* TERRAIN +

ALL MOUNTAIN 8/10



PARK 10/10



POWDER 5/10



* FEATURES +

20mm POPLAR / 20mm PAULOWNIA

Triax Fiberglass

Premium Sintered Base 8,4M

Impact Shield Topsheet

Hardened Steel Edge

RailGuard Sidewalls

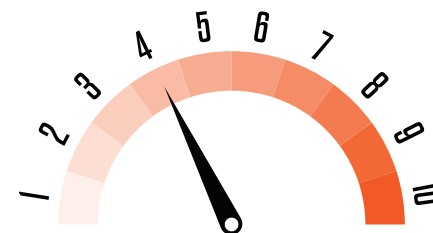
Fast Wend Natural Wax

30% Bio Epoxy Resin



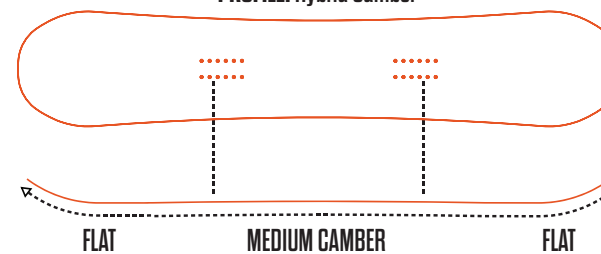
TOPSHEET

BASE



FRIENDLY & PLAYFUL

PROFILE: Hybrid Camber



20mm POPLAR / 20mm PAULOWNIA

SIZE	WAIST WIDTH	SIDECUT	EFFECTIVE EDGE
140	23.4	7/6.6/6.2/6.6/7	106.6
143	23.6	7.2/6.8/6.4/6.8/7.2	109.2
146	23.8	7.4/7/6.6/7/7.4	111.8
149	24	7.6/7.2/6.8/7.2/7.6	114.4
152	24.2	7.8/7.4/7/7.4/7.8	117



T32M YOUTH

TRUE TWIN WITH A FRIENDLY FLEX FOR DEVELOPING THE NEXT GENERATIONAL PARK RIDER

Custom tailored for young rippers, The T32M Youth is engineered to meet the need of a young park rider looking for a higher level of response and pop. Jumping, jibbing, ripping, this is the board you want under your feet.

BEHIND THE ART: MITCH DELANEY

After nearly a decade of sharpening his teeth in Volcom's iconic art department, New Englander Mitch Delaney found his way into the creative core of snowboarding with ThirtyTwo as Art Director.

* SHAPE TECH +

SHAPE: Twin Tip

NOSE & TAIL RISE: Park Kick

SIDECUT: Progressive Five-Radius Blend

SET BACK: Centered

TAPER: No Taper

* TERRAIN +

ALL MOUNTAIN 8/10



PARK 10/10



POWDER 6/10



* FEATURES +

100% POPLAR

Biax Fiberglass

Durable Extruded Base

Impact Shield Topsheet

Hardened Steel Edge

RailGuard Sidewalls

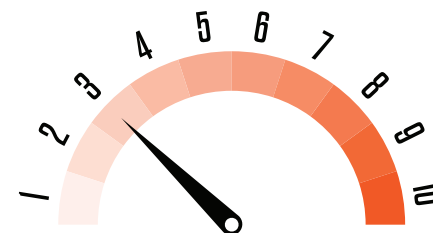
Fast Wend Natural Wax

30% Bio Epoxy Resin



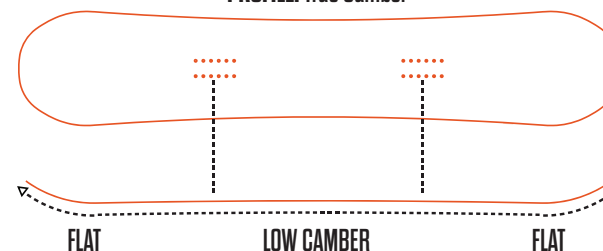
TOPSHEET

BASE



SOFT & PLAYFUL

PROFILE: True Camber



100% POPLAR

SIZE	WAIST WIDTH	SIDECUT	EFFECTIVE EDGE
125	23.1	6.2/5.9/5.6/5.9/6.2	93.2
130	23.4	6.5/6.2/5.9/6.2/6.5	97.6
135	23.7	6.8/6.5/6.2/6.5/6.8	102
140	24	7.1/6.8/6.5/6.8/7.1	106.4
145	24.3	7.4/7.1/6.8/7.1/7.4	110.8



PERMANENT VACATION

AN ATV DIRECTIONAL TWIN WITH OPTIMAL SIDE HIT POP

The Permanent Vacation is your one way boarding pass to all mountain ripping paradise. This Directional twin is a medium camber lightweight shredder with a slight set back in the inserts for maximum chargeability.

BEHIND THE ART: NATHAN KOSTECHKO

Equal parts tattooist and fine artist, Nathan Kostechko moves seamlessly between skin, canvas, and culture. Taking inspiration from his surf upbringing in San Clemente, Nathan infuses his work with a raw, organic edge that echoes the California coastline.

* SHAPE TECH +

SHAPE: Directional Twin

NOSE & TAIL RISE: All-Terrain Kick

SIDECUT: Progressive Five-Radius Blend

SET BACK: 0.8" (20mm)

TAPER: No Taper

* TERRAIN +

ALL MOUNTAIN 10/10

PARK 8/10

POWDER 8/10

* FEATURES +

20mm Poplar / 20mm Paulownia

Biax Fiberglass

Premium Sintered Base 8.4M

Impact Shield Topsheet

Hardened Steel Edge

RailGuard Sidewalls

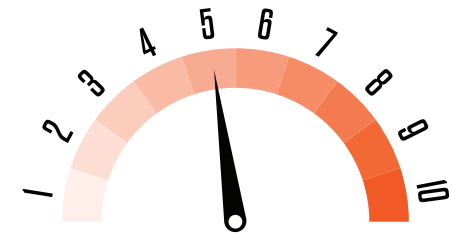
Fast Wend Natural Wax

30% Bio Epoxy Resin

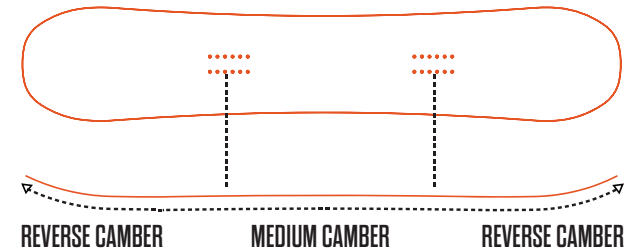


TOPSHEET

BASE



PROFILE: CamRock



20mm POPLAR / 20mm PAULOWNIA

SIZE	WAIST WIDTH	SIDECUT	EFFECTIVE EDGE
154	25.1	7.7/7.3/6.9/7.3/7.7	114.4
156	25.3	7.8/7.4/7.7/7.4/7.8	116
156 W	26	7.9/7.5/7.1/7.5/7.9	116
158	25.5	7.9/7.5/7.1/7.5/7.9	117.6
159 W	26.3	8/7.6/7.2/7.6/8	118.4
161	25.8	8.1/7.7/7.3/7.7/8.1	120
162 W	26.6	8.2/7.8/7.4/7.8/8.2	120.8



XXX FAVA PRO

FROM THE MIND OF PAT FAVA, A DO ALL BOARD
BUILT FOR ALL FREESTYLE RIDING TYPES

The XXX Fava Pro is designed to withstand the high impact riding style that Pat brings to the streets and resorts alike. The true medium camber mid-stiff profile combined with the twin carbon boost stringers delivers a strong lightweight hybrid twin.

BEHIND THE ART: KEENAN SHURR

With an unmistakable airbrush style that's both gritty and surreal, Keenan Shurr has carved out a space where music and skate intersect.

* SHAPE TECH +

SHAPE: Hybrid Twin

NOSE & TAIL RISE: Park Kick

SIDECUT: Progressive Five-Radius Blend

SET BACK: Centered

TAPER: No Taper

* TERRAIN +

ALL MOUNTAIN 9/10

PARK 10/10

POWDER 8/10

* FEATURES +

Twin Carbon Boost Stringers

10mm POPLAR / 20mm PAULOWNIA

+ BAMBOO RAILS

Triax Fiberglass

Premium Sintered Base 8,4M

Impact Shield Topsheet

Hardened Steel Edge

RailGuard Sidewalls

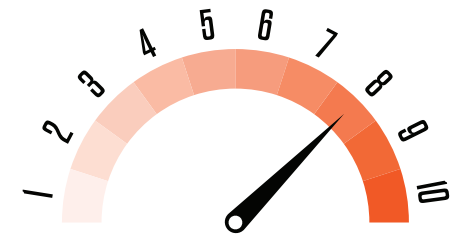
Fast Wend Natural Wax

30% Bio Epoxy Resin



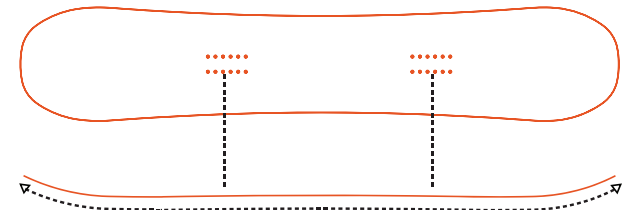
TOPSHEET

BASE



MID-STIFF / LIVELY

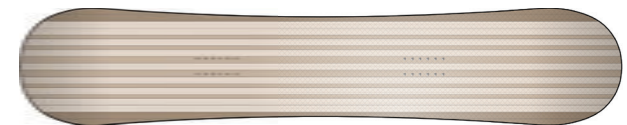
PROFILE: TRUE MEDIUM CAMBER



MEDIUM CAMBER



Twin Carbon Boost Stringers



10mm POPLAR / 20mm PAULOWNIA + BAMBOO RAILS

SIZE	WAIST WIDTH	SIDECUT	EFFECTIVE EDGE
152	25.4	8.4/8.7/8.8/8.4	117.4
155	25.6	8.6/8.2/7.8/8.2/8.6	120
158	25.8	8.8/8.4/8.8/8.4/8.8	122.6
159 W	26.4	8.9/8.5/8.1/8.5/8.9	123.4
161	26	9/8.6/8.2/8.6/9	125.2
162 W	26.6	9.1/8.7/8.3/8.7/9.1	126



PERMANENT VACATION CARBON

EXTRA RESPONSE AND EXTRA POWER
WITH OUR FULL CARBON LAY UP

The Permanent Vacation Carbon is nightmare in paradise. This full layup carbon version is stiff and powerful and holds up in choppy unpredictable terrain. This Directional twin is a medium camber lightweight shredder with a slight set back in the inserts for maximum charginability.

BEHIND THE ART: NATHAN KOSTECKO

Equal parts tattooist and fine artist, Nathan KostECKO moves seamlessly between skin, canvas, and culture. Taking inspiration from his surf upbringing in San Clemente, Nathan infuses his work with a raw, organic edge that echoes the California coastline.

* SHAPE TECH +

SHAPE: Directional Twin

NOSE & TAIL RISE: All-Terrain Kick

SIDECUT: Progressive Five-Radius Blend

SET BACK: 0,8" (20mm)

TAPER: No Taper

* TERRAIN +

ALL MOUNTAIN 10/10

PARK 8/10

POWDER 8/10

* FEATURES +

5mm POPLAR / 20mm PAULOWNIA

Full Carbon Layup

Premium Sintered Base 8,4M

Impact Shield Topsheet

Hardened Steel Edge

RailGuard Sidewalls

Fast Wend Natural Wax

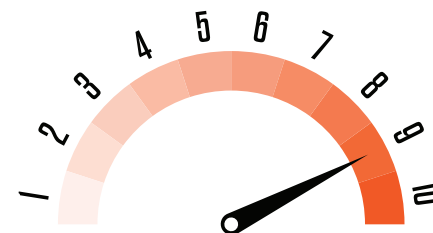
30% Bio Epoxy Resin

Flip Flop Base



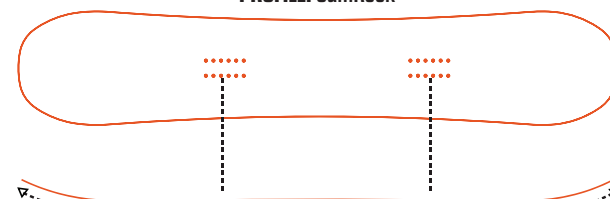
TOPSHEET

*FLIP FLOP BASE



STIFF & POWERFUL

PROFILE: CamRock



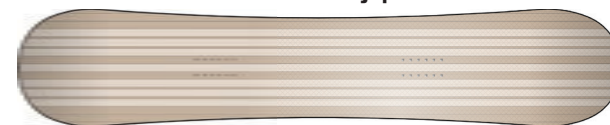
REVERSE CAMBER

HIGH CAMBER

REVERSE CAMBER



Full Carbon Layup



5mm POPLAR / 20mm PAULOWNIA

SIZE	WAIST WIDTH	SIDECUT	EFFECTIVE EDGE
154	25.1	7.7/7.3/6.9/7.3/7.7	114.4
156	25.3	7.8/7.4/7.1/7.4/7.8	116
156 W	26	7.9/7.5/7.1/7.5/7.9	116
158	25.5	7.9/7.5/7.1/7.5/7.9	117.6
159 W	26.3	8/7.6/7.2/7.6/8	118.4
161	25.8	8.1/7.7/7.3/7.7/8.1	120
162 W	26.6	8.2/7.8/7.4/7.8/8.2	120.8



W's CRUCIBLE

DIRECTIONAL TWIN FREESTYLE PROGRESSION
FROM PARK TO ALL MOUNTAIN

The Women's crucible is a pinky promise that this board will perform in all terrain. This directional twin is designed for an advancing women rider looking for reliable jib board for park progress.

BEHIND THE ART: CURT MONTGOMERY

Toronto-based tattoo artist Curt Montgomery is a master of provocative restraint—his signature single-line illustrations deliver equal parts flirtation and bite.

* SHAPE TECH +

SHAPE: Directional Twin

NOSE & TAIL RISE: All-Terrain Kick

SIDECUT: Progressive Five-Radius Blend

SET BACK: 0,8" (20mm)

TAPER: No Taper

* TERRAIN +

ALL MOUNTAIN 10/10

PARK 8/10

POWDER 8/10

* FEATURES +

20mm POPLAR / 20mm PAULOWNIA

Biax Fiberglass

Premium Sintered Base 8.4mm

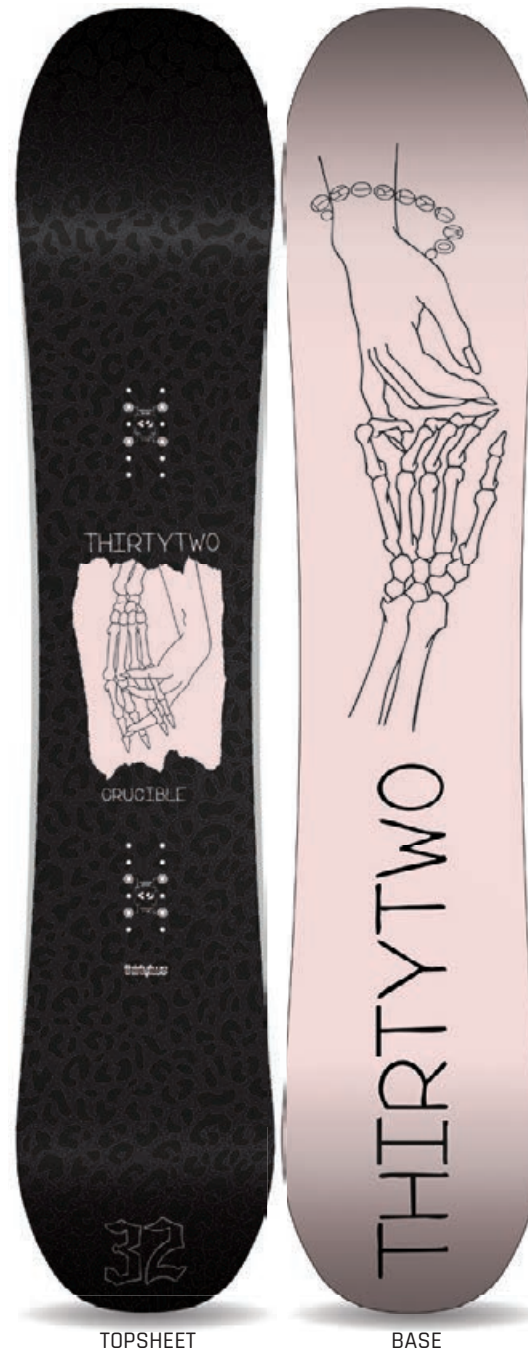
Impact Shield Topsheet

Hardened Steel Edge

RailGuard Sidewalls

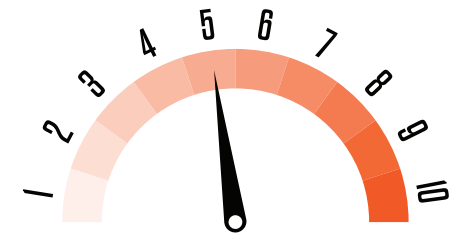
Fast Wend Natural Wax

30% Bio Epoxy Resin

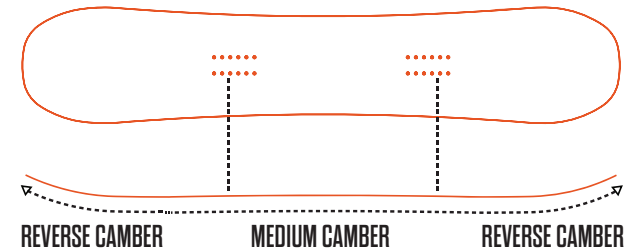


TOPSHEET

BASE



PROFILE: CamRock



20mm POPLAR / 20mm PAULOWNIA

SIZE	WAIST WIDTH	SIDECUT	EFFECTIVE EDGE
139	23.7	6.3/5.9/5.5/5.9/6.3	100.6
142	23.9	6.5/6.1/5.7/6.1/6.5	103.2
145	24.1	6.7/6.3/5.9/6.3/6.7	105.8
148	24.3	6.9/6.5/6.1/6.5/6.9	108.4
151	24.5	7.1/6.7/6.3/6.7/7.1	111



SNAFU

HARD CHARGING HYBRID CAMBER DIRECTIONAL
DESIGNED FOR ALL MOUNTAIN ADVENTURES

The SNAFU is anything but ordinary. Take a creative journey on this all mountain adventure stick. A unique nose and tail designed with the Thirtytwo Pow-Kick allows for unmatched charging through powder and unexpected portals to other wintery dimensions.

BEHIND THE ART: LUCAS BEAUFORT

What started on social media as sketching his Gus Gus character over skate and snow magazine covers has grown into a full-time creative journey. Lucas Beaufort is the ultimate DIY artist-fueled by community, driven by connection.

* SHAPE TECH +

SHAPE: Tapered Directional

NOSE & TAIL RISE: Pow Kick

SIDECUT: Progressive Five-Radius Blend

SET BACK: 0,8" (20mm)

TAPER: 0,2" (6mm)

* TERRAIN +

ALL MOUNTAIN 9/10



PARK 7/10



POWDER 10/10



* FEATURES +

20mm POPLAR / 20mm PAULOWNIA

Biax Fiberglass

Premium Sintered Base 8,4M

Impact Shield Topsheet

Hardened Steel Edge

RailGuard Sidewalls

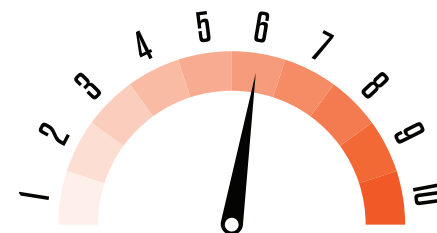
Fast Wend Natural Wax

30% Bio Epoxy Resin



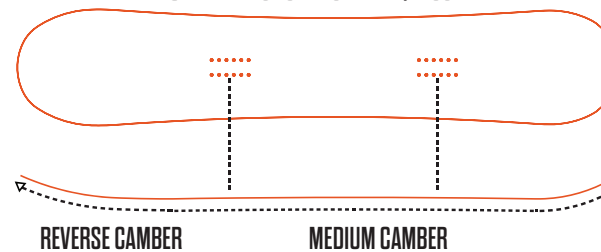
TOPSHEET

BASE



HAPPY MEDIUM

PROFILE: DIRECTIONAL CAMBER / ROCKER



20mm POPLAR / 20mm PAULOWNIA

SIZE	WAIST WIDTH	SIDECUT	EFFECTIVE EDGE
153	25.5	8/7.6/7.2/7.6/8	115.4
156	25.7	8.2/7.8/7.4/7.8/8.2	118
158 W	26.5	8.4/8/7.6/8/8.4	119.6
159	25.9	8.4/8/7.6/8/8.4	120.6
161 W	26.7	8.6/8.2/7.8/8.2/8.6	122.2
162	26.1	8.6/8.2/7.8/8.2/8.6	123.2
164 W	26.9	8.8/8.4/8/8.4/8.8	124.8



W's REIKI

CONNECTION AND STABILITY DEFINE THIS WOMEN'S ALL MOUNTAIN DIRECTIONAL BOARD

Encounter the healing energy of the tapered directional women's Reiki. Developed to be the ultimate powder spirit that will guide a progressive woman rider into a realm of euphoria and down hill nirvana.

BEHIND THE ART: DELANEY RENEE

Delaney Renee is a Los Angeles-based tattoo artist whose work leans delicate in technique with fine-line execution, but dark in subject matter—bringing a quiet intensity to the contrast that's become her signature.

* SHAPE TECH +

SHAPE: Tapered Directional

NOSE & TAIL RISE: Pow Kick

SIDECUT: Progressive Five-Radius Blend

SET BACK: 0,8" (20mm)

TAPER: 0,2" (6mm)

* TERRAIN +

ALL MOUNTAIN 9/10



PARK 7/10



POWDER 10/10



* FEATURES +

20mm POPLAR / 20mm PAULOWNIA

Biax Fiberglass

Premium Sintered Base 8,4M

Impact Shield Topsheet

Hardened Steel Edge

RailGuard Sidewalls

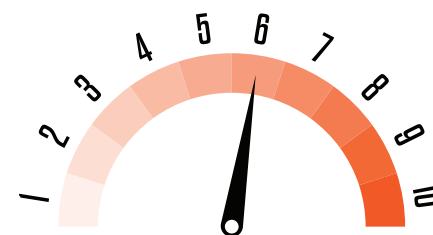
Fast Wend Natural Wax

30% Bio Epoxy Resin



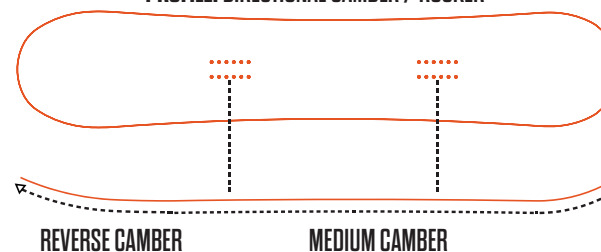
TOPSHEET

BASE



HAPPY MEDIUM

PROFILE: DIRECTIONAL CAMBER / ROCKER



20mm POPLAR / 20mm PAULOWNIA

SIZE	WAIST WIDTH	SIDECUT	EFFECTIVE EDGE
142	24.2	6.9/6.5/6.1/6.5/6.9	105.6
145	24.4	7.1/6.7/6.3/6.7/7.1	108.2
148	24.6	7.3/6.9/6.5/6.9/7.3	110.8
151	24.8	7.5/7.1/6.7/7.1/7.5	113.4
154	25	7.7/7.3/6.9/7.3/7.7	116



THRILL PILL

OUR MAXIMUM VOLUME SHIFT BOARD DESIGNED FOR RIPPING AROUND THE MOUNTAIN LIKE A SKATE PARK

Don't let the size fool you, the volume shifting on the Thrill Pill is a game changer. With a reduced nose and tail, the side cut rides larger than you would expect. Built with pure fun in mind, the Thrill Pill is a must have in every quiver.

BEHIND THE ART: NOEL BOYT

Colorado-born and world-tempered, Noel Boyt's formative designs have served as the blueprint for some of the most influential streetwear and skate brands in the game. With an almost otherworldly sense for color, pattern, and cultural undercurrents, his influence continues to reverberate through the brands he touched.

* SHAPE TECH +

SHAPE: Twin Tip

NOSE & TAIL RISE: Flat Kick

SIDECUT: Progressive Triple-Radius Blend

SET BACK: Centered

TAPER: No Taper

* TERRAIN +

ALL MOUNTAIN 7/10



PARK 10/10



POWDER 3/10



* FEATURES +

100% POPLAR

Biax Fiberglass

Durable Extruded Base

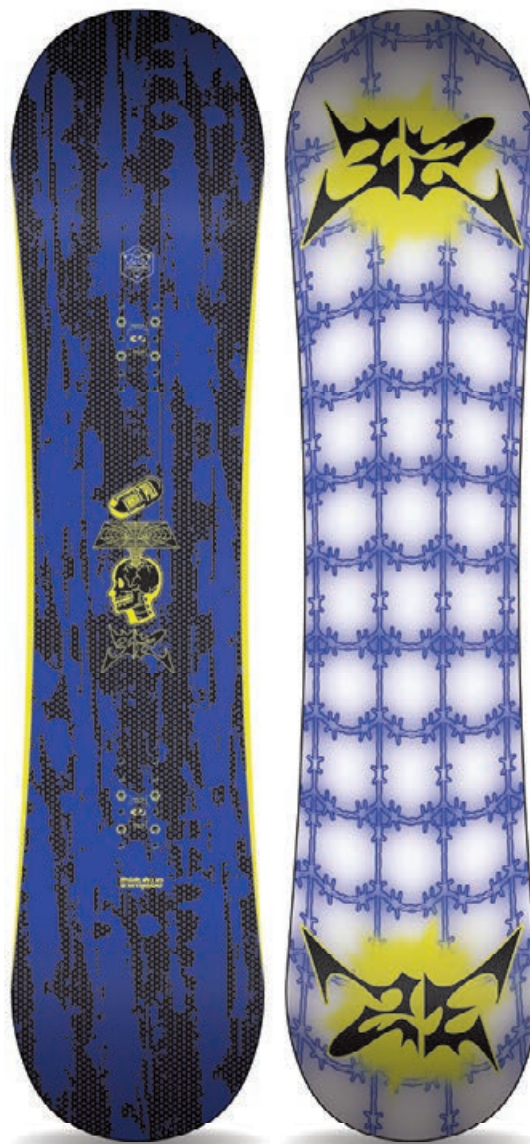
Impact Shield Topsheet

Hardened Steel Edge

RailGuard Sidewalls

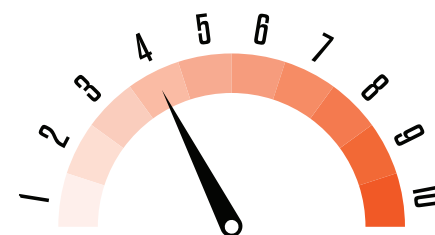
Fast Wend Natural Wax

30% Bio Epoxy Resin



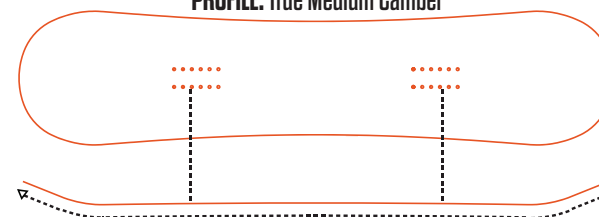
TOPSHEET

BASE



FRIENDLY & PLAYFUL

PROFILE: True Medium Camber



MEDIUM CAMBER



100% POPLAR

SIZE	WAIST WIDTH	SIDECUT	EFFECTIVE EDGE
132	25.6	10/5/10	100



ATMOSPHERE

A SHAPED TAPERED DIRECTIONAL BOARD
DESIGNED TO BLAST THE ENTIRE PEAK

A new storm has been forming on the horizon and it has finally made land fall. The Atmosphere is a tapered directional dream designed to hover through powder and blow throw resort trails. Top to bottom the attention to detail in the atmosphere is force to be reckoned with.

BEHIND THE ART: MITCH DELANEY

After nearly a decade of sharpening his teeth in Volcom's iconic art department, New Englander Mitch Delaney found his way into the creative core of snowboarding with ThirtyTwo as Art Director.

* SHAPE TECH +

SHAPE: Tapered Directional

NOSE & TAIL RISE: Pow Kick

SIDECUT: Directional Dual-Radius Blend

SET BACK: 0,8" (20mm)

TAPER: 0,6" (16mm)

* TERRAIN +

ALL MOUNTAIN 7/10

PARK 4/10

POWDER 10/10

* FEATURES +

Dir. Carbon Boost Stringers

5mm POPLAR / 20mm PAULOWNIA

Biax Fiberglass

Premium Sintered Base 8,4M

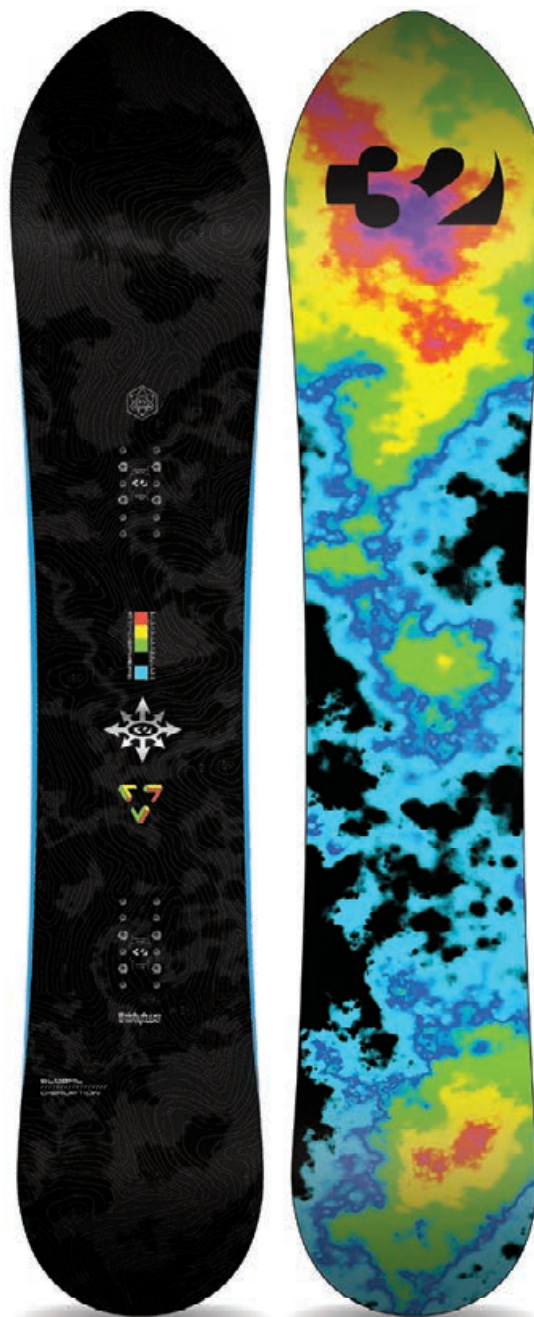
Impact Shield Topsheet

Hardened Steel Edge

RailGuard Sidewalls

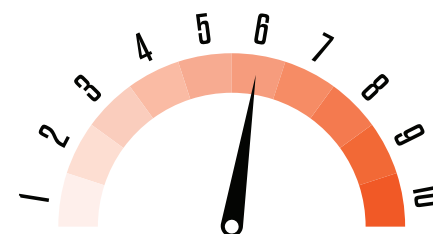
Fast Wend Natural Wax

30% Bio Epoxy Resin



TOPSHEET

BASE



HAPPY MEDIUM

PROFILE: Directional Camber / Rocker



HIGH REVERSE CAMBER

MEDIUM CAMBER

LOW REVERSE CAMBER



Dir. Carbon Boost Stringers



5mm POPLAR / 20mm PAULOWNIA

SIZE	WAIST WIDTH	SIDECUT	EFFECTIVE EDGE
150	25.2	7.5/6.9	112.6
154	25.6	7.7/7.1	115.8
158	26	7.9/7.3	119
162	26.4	8.1/7.5	122.2



CREEDLER

TWIN BOARD WITH PERFECT POP FOR FREESTYLE RIDING

Nothing screamed rebellion louder in the 1990's than the Volcom Stone. The Creedler is the pissed off Volcom version of the Thirtytwo T32M. Equipped with twin power stringers in the nose and tail, The Creedler is a re-imagined blast from the past.

BEHIND THE ART: MITCH DELANEY

After nearly a decade of sharpening his teeth in Volcom's iconic art department, New Englander Mitch Delaney found his way into the creative core of snowboarding with ThirtyTwo as Art Director.

* SHAPE TECH +

SHAPE: Twin Tip

NOSE & TAIL RISE: Park Kick

SIDECUT: Progressive Five-Radius Blend

SET BACK: Centered

TAPER: No Taper

* TERRAIN +

ALL MOUNTAIN 8/10

PARK 10/10

POWDER 5/10

* FEATURES +

Twin Power Carbon Stringers

20mm POPLAR / 20mm PAULOWNIA

Triax Fiberglass

Premium Sintered Base 8.4M

Impact Shield Topsheet

Hardened Steel Edge

RailGuard Sidewalls

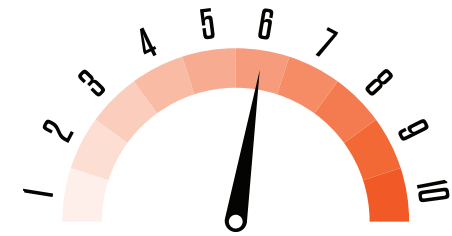
Fast Wend Natural Wax

30% Bio Epoxy Resin



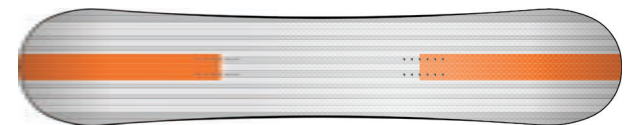
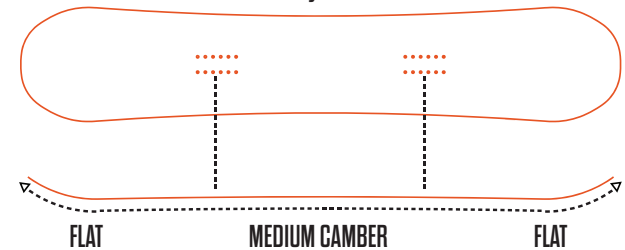
TOPSHEET

*FLIP FLOP BASE



HAPPY MEDIUM

PROFILE: Hybrid Camber



Twin Power Carbon Stringers



20mm POPLAR / 20mm PAULOWNIA

SIZE	WAIST WIDTH	SIDECUT	EFFECTIVE EDGE
148	24.4	8.7/8.7/7.2/7.6/8	114.6
151	24.7	8.2/7.8/7.4/7.8/8.2	117
154	25	8.4/8.7/6.8/8.4	119.4
156	25.2	8.5/8.1/7.7/8.1/8.5	121
157 W	26.1	8.6/8.2/7.8/8.2/8.6	122
158	25.4	8.6/8.2/7.8/8.2/8.6	122.6
160 W	26.3	8.7/8.3/7.9/8.3/8.7	124.6
161	25.7	8.8/8.4/8.4/8.4/8.8	125



MOCLOV

AN ATV DIRECTIONAL TWIN WITH OPTIMAL SIDE HIT POP

The Y2K era of Volcom fanned the flame into the worldwide fire storm snowboarding has become. The Moclov is a dressed to impress version of The Permanent Vacation. The responsive all mountain directional twin will have you saying "Yes Sir, I Agree."

BEHIND THE ART: MITCH DELANEY

After nearly a decade of sharpening his teeth in Volcom's iconic art department, New Englander Mitch Delaney found his way into the creative core of snowboarding with ThirtyTwo as Art Director.

* SHAPE TECH +

SHAPE: Directional Twin

NOSE & TAIL RISE: All Terrain Kick

SIDECUT: Progressive Five-Radius Blend

SET BACK: 0.8" (20mm)

TAPER: No Taper

* TERRAIN +

ALL MOUNTAIN 10/10

PARK 8/10

POWDER 8/10

* FEATURES +

Dir. Power Carbon Stringers

20mm POPLAR / 20mm PAULOWNIA

Biax Fiberglass

Premium Sintered Base 8.4M

Impact Shield Topsheet

Hardened Steel Edge

RailGuard Sidewalls

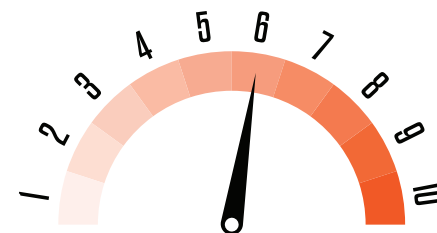
Fast Wend Natural Wax

30% Bio Epoxy Resin



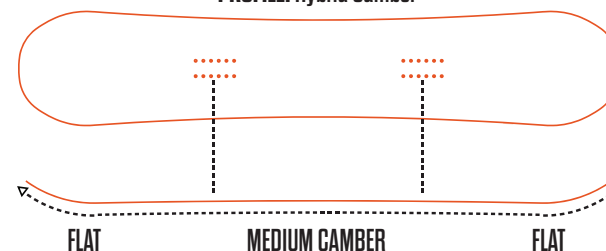
TOPSHEET

BASE

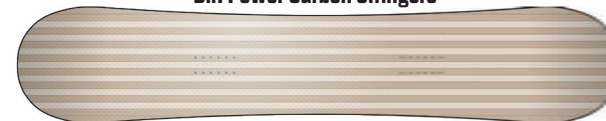


HAPPY MEDIUM

PROFILE: Hybrid Camber



Dir. Power Carbon Stringers



20mm POPLAR / 20mm PAULOWNIA

SIZE	WAIST WIDTH	SIDECUT	EFFECTIVE EDGE
148	24.4	8.7/8.7/7.2/7.6/8	114.6
151	24.7	8.2/7.8/7.4/7.8/8.2	117
154	25	8.4/8.7/8.6/8.8/8.4	119.4
156	25.2	8.5/8.1/7.7/8.1/8.5	121
157 W	26.1	8.6/8.2/7.8/8.2/8.6	122
158	25.4	8.6/8.2/7.8/8.2/8.6	122.6
160 W	26.3	8.7/8.3/7.9/8.3/8.7	124.6
161	25.7	8.8/8.4/8.8/8.4/8.8	125



COSM

HARD CHARGING TRUE CAMBER DIRECTIONAL
DESIGNED FOR ALL MOUNTAIN ADVENTURES

The roots of Volcom crawl deep into the DNA of snowboarding progression and history. Namely through the influence of their legendary films. Referencing the psychedelic side of the stone the COSM is the Volcom shape shift of the Snafu.

BEHIND THE ART: MITCH DELANEY

After nearly a decade of sharpening his teeth in Volcom's iconic art department, New Englander Mitch Delaney found his way into the creative core of snowboarding with ThirtyTwo as Art Director.

* SHAPE TECH +

SHAPE: Tapered Directional

NOSE & TAIL RISE: Pow Kick

SIDECUT: Progressive Five-Radius Blend

SET BACK: 0,8" (20mm)

TAPER: 0,2" (6mm)

* TERRAIN +

ALL MOUNTAIN 9/10



PARK 7/10



POWDER 10/10



* FEATURES +

20mm POPLAR / 20mm PAULOWNIA

Biax Fiberglass

Premium Sintered Base 8,4M

Impact Shield Topsheet

Dir. Power Carbon Stringers

Hardened Steel Edge

RailGuard Sidewalls

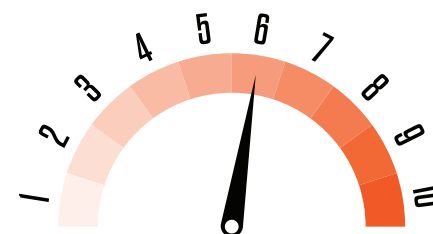
Fast Wend Natural Wax

30% Bio Epoxy Resin



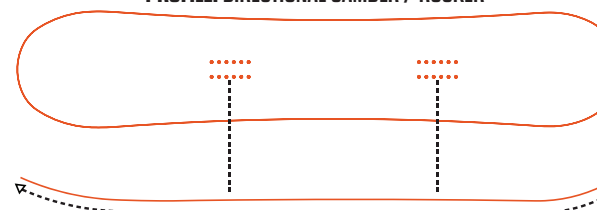
TOPSHEET

BASE



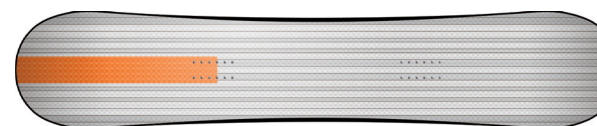
HAPPY MEDIUM

PROFILE: DIRECTIONAL CAMBER / ROCKER



REVERSE CAMBER

MEDIUM CAMBER



Dir. Carbon Boost Stringers



20mm POPLAR / 20mm PAULOWNIA

SIZE	WAIST WIDTH	SIDECUT	EFFECTIVE EDGE
153	25.5	8/7.6/7.2/7.6/8	115.4
156	25.7	8.2/7.8/7.4/7.8/8.2	118
158 W	26.5	8.4/8/7.6/8/8.4	119.6
159	25.9	8.4/8/7.6/8/8.4	120.6
161 W	26.7	8.6/8.2/7.8/8.2/8.6	122.2
162	26.1	8.6/8.2/7.8/8.2/8.6	123.2
164 W	26.9	8.8/8.4/8/8.4/8.8	124.8



BYH - YOUTH

TRUE TWIN WITH A FRIENDLY FLEX FOR
DEVELOPING THE NEXT GENERATIONAL PARK RIDER

The Big Youth Happening movement by Volcom focused on the future of rippers to come. The BYH is designed for just that, a park board built for progression through playful flex and quality ingredients.

BEHIND THE ART: MITCH DELANEY

After nearly a decade of sharpening his teeth in Volcom's iconic art department, New Englander Mitch Delaney found his way into the creative core of snowboarding with ThirtyTwo as Art Director.

* SHAPE TECH +

SHAPE: Directional Twin

NOSE & TAIL RISE: All-Terrain Kick

SIDECUT: Progressive Five-Radius Blend

SET BACK: 0,8" (20mm)

TAPER: No Taper

* TERRAIN +

ALL MOUNTAIN 10/10

PARK 8/10

POWDER 8/10

* FEATURES +

100% POPLAR

Biax Fiberglass

Durable Extruded Base

Impact Shield Topsheet

Hardened Steel Edge

RailGuard Sidewalls

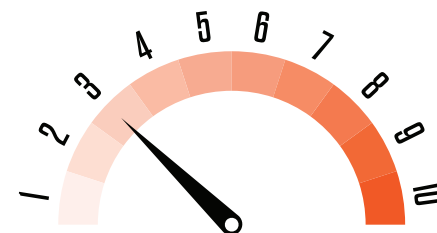
Fast Wend Natural Wax

30% Bio Epoxy Resin



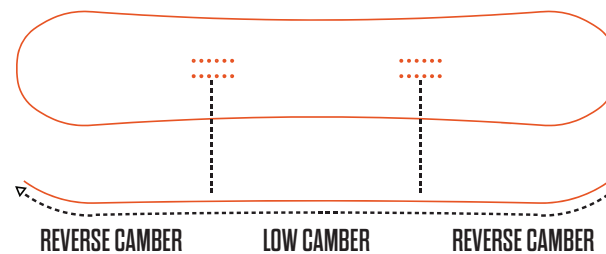
TOPSHEET

BASE



SOFT & PLAYFUL

PROFILE: Cam/Rock



100% PAULOWNIA

SIZE	WAIST WIDTH	SIDECUT	EFFECTIVE EDGE
125	23.1	6.2/5.9/5.6/5.9/6.2	93.2
130	23.4	6.5/6.2/5.9/6.2/6.5	97.6
135	23.7	6.8/6.5/6.2/6.5/6.8	102
140	24	7.1/6.8/6.5/6.8/7.1	106.4
145	24.3	7.4/7.1/6.8/7.1/7.4	110.8

M's	W's	Unisex	Junior Unisex
-----	-----	--------	------------------




Volcom
Collab

\$

DESTROY COLLECTION
RESORT TRUE TWIN


Middle Earth Youth
Twin Tip
Camber
3/10 Flex Flex



W's Crucible
Directional Twin, 20mm Setback
Camber / Rocker
5/10 Flex

VOLCOM BYH Youth
Directional Twin, 20mm Setback
Camber / Rocker
3/10 Flex Flex

Thrill Pill
Twin Tip
Camber
4/10 Flex



W's Reiki
Tapered Directional
Camber / Rocker
6/10 Flex

CRYOCHAMBER
CREATIVE SHAPES

Limited 2526

DESTROY COLLECTION



SHRED COLLECTION



Slash COLLECTION

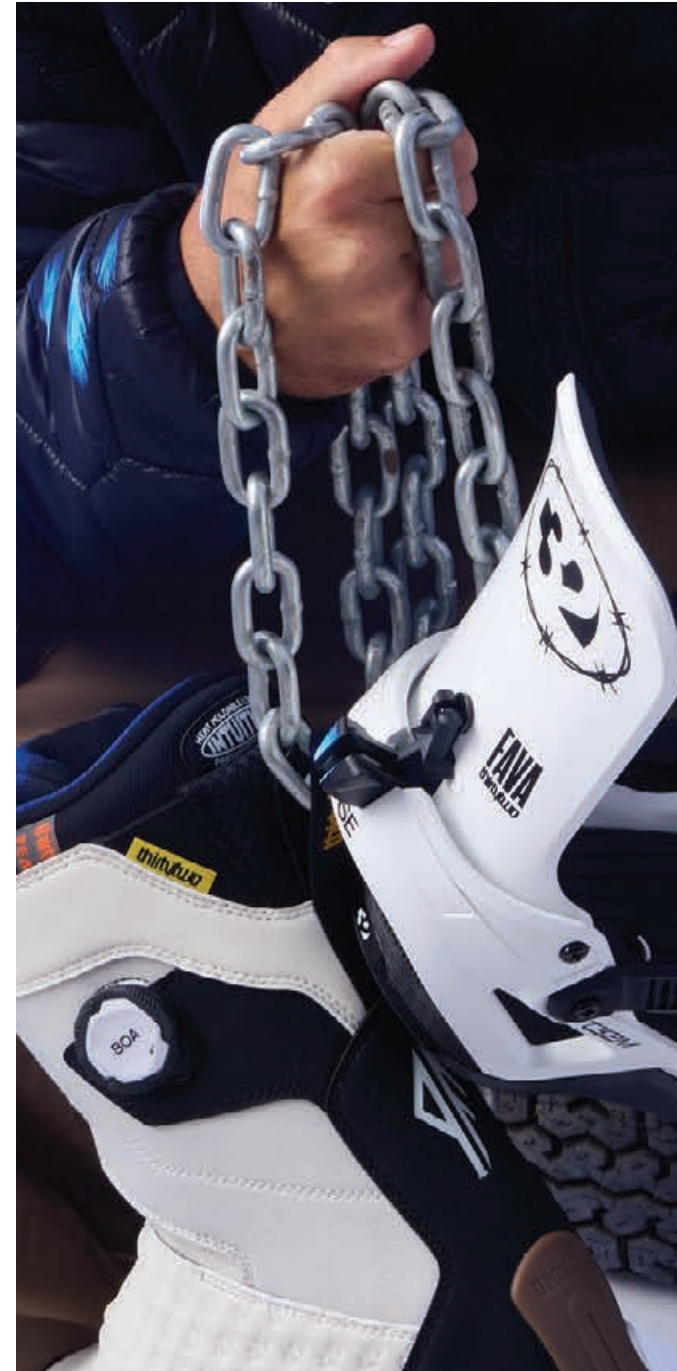


CRYOCHAMBER COLLECTION



DIY CULTURE

DIY CULTURE





T32M BINDING WITH FASE
PAT FAVA

W ²⁶/₂₇





thirtytwo | FASE™

FAST ENTRY SYSTEM

RIDER DRIVEN BINDINGS

Engineered to own every line, the T32M binding locks you in from pow to park. With unrivaled support, mind-bending flex, and uncompromising durability, It's built for the ultimate ride – every single time.

As for boot-to-binding connection?
Meet your new teammate.

The next-generation two-strap snowboard binding system

The FASE® Fast Entry System enhances the locked-in feel of traditional two-strap bindings, combined with an ultra-fast strapping-in process, while delivering unmatched high performance, all-day comfort, and a natural board feel.

Key Advantages of the FASE® System

- + Effortless fast entry and exit
- + Enhanced locked-in feel
- + True two-strap performance
- + Instant on-the-fly adjustments
- + Trusted by riders in every terrain and condition
- + Mountain-proof durability with lifetime warranty
- + Minimal weight and footprint
- + Compatible with all snowboard boots

Learn more about the FASE® System on [Thirtytwo.com](https://thirtytwo.com)



How do FASE® bindings work?

FASE® builds on the two-strap design by introducing three key ingredients: Each component plays a role, but it's the sum of these parts that makes the process of getting in and out of FASE® bindings so fast and intuitive.



THE AUTOBACK

The key to the revolutionary FASE® Fast Entry System, the AutoBack, allows for hands-free entry into the binding. This intuitive design automatically closes as the boot enters the binding and opens when you lift your boot out. The AutoBack also folds flat for skating, chairlifts, and storage.



THE FASTSTRAP

An innovative long ankle ladder that remains connected for ultra-fast, one-handed strapping-in. With a classic ratchet design to fine tune ankle strap tension, the FastStrap compliments the AutoBack's automatic closure system so riders can strap-in faster than ever before.



THE LOCKED-IN TOE STRAP

Simply set it and forget it. Designed to remain in position to complement the Fast Entry System. The LSR 2.0 buckle and unique tri-toothed ladder allow you to 'set it and forget it' or make easy on-the-fly fit adjustments.

USER FRIENDLY

An intuitive design with the classic two-strap interaction method as traditional two-strap bindings. The AutoBack functionality, combined with the convenience of the Locked-In Toe Strap, optimizes easy, one-handed strapping in whether stationary or on the go.

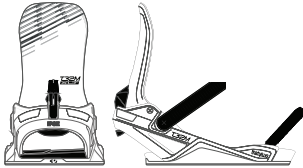
SSSS

SSSS

SSS

SSS

SS



T32M XLT CARBON

Colors: 1
Flex: Stiff 8/10

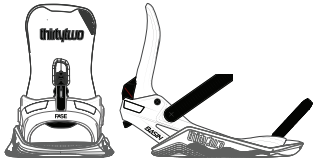
Slask
COLLECTION



T32M

Colors: 5
Flex: Medium 7/10

DESTROY
COLLECTION



BASIN

Colors: 4
Flex: Mid-Soft 5/10

SHRED
COLLECTION

New Model

Soft

Medium

Stiff



[T32M XLT CARBON]



T32M XLT CARBON

The most responsive binding in the Thirtytwo line up, the T32M XLT Carbon with FASE®. This binding is the all mountain weapon that will take your riding experience to the next level. The stiff flexing carbon highback, with nylon glass fiber baseplate offers response and connection to your board that is unlike any other.

* PERFORMANCE +

BINDING FLEX EDGE TO EDGE



BINDING FLEX SIDE TO SIDE



* TECHNOLOGY +

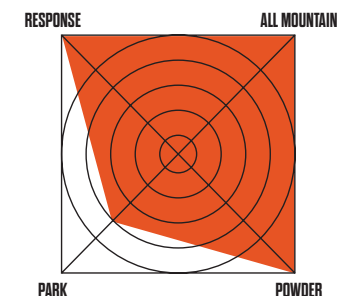
- + FASE® fast entry system
- + Stiff flex carbon fiber high back for aggressive performance and response
- + TPU/EVA foot bed and gas pedal for high response board feel
- + Medium flex TPU ankle strap
- + Nylon/glass fiber baseplate
- + 3 degree footbed canting
- + Aluminum ratchets with stainless steel hardware for lightweight durability

Black: T.27.BNU.XLT.001

SIZES:
S (7-9) / M (9.5-11) / L (11.5+)



BLACK





T32M

Engineered to own every line, the T32M FASE® binding locks you in from pow to park. With unrivaled support, mind-bending flex, and uncompromising durability, it's built for the ultimate ride, every single time. As for boot-to-binding connection? Meet your new teammate.

* PERFORMANCE +

BINDING FLEX EDGE TO EDGE



SOFT MEDIUM STIFF

BINDING FLEX SIDE TO SIDE



SOFT MEDIUM STIFF

* TECHNOLOGY FEATURES+

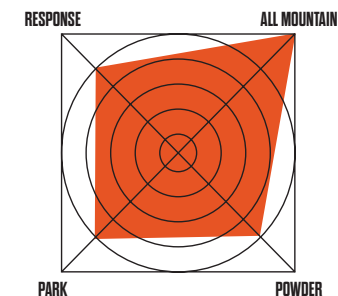
- + FASE® fast entry system
- + Mid flex nylon/glass fiber highback for balanced performance and board feel
- + TPU/EVA foot bed and gas pedal for high response board feel
- + Medium flex TPU ankle strap
- + Aluminum ratchets with stainless steel hardware for lightweight durability
- + 3 degree footbed cant

Black: T.27.BNU.TEA.BK.3M
Bone: T.27.BNU.TEA.C1
Fava: T.27.BNU.TEF.100
Stevens: T.27.BNU.TES.201
Volcom: T.27.BNU.TEV.976

SIZES:
S (7-9) / M (9.5-11) / L (11.5+)



BLACK



COLORWAYS



BONE

FAVA

STEVENS

VOLCOM

[FAVA T32M BINDING]

T.27.BNU.TEF.100



FAVA
FAVA





[STEVENS T32M BINDING]

T.27.BNU.TES.201





SCOTT BLUM
[VOLCOM T32M BINDING]

T.27.BNU.TEV.976

VOLCOM







BALSLIV



BASIN

The Basin Binding is the next evolution of Thirtytwo technology featuring FASE® System. The Basin is engineered for those looking for a softer playful binding with added dampening and flex without sacrificing durability. For comfy laps with max board feel, basin has got you.

* PERFORMANCE +

BINDING FLEX EDGE TO EDGE



SOFT MEDIUM STIFF

BINDING FLEX SIDE TO SIDE



SOFT MEDIUM STIFF

* TECH FEATURES+

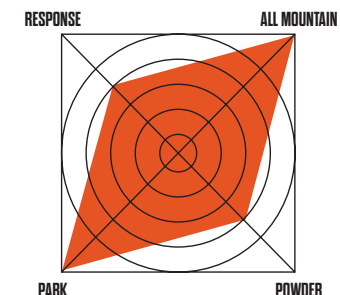
- + FASE® fast entry system
- + Mid-soft flexing highback with a shape optimizing tweakability and maintaining board feel
- + Molded Foundation Foam base plate for dampening and increased board feel
- + Nylon footbed slides great for easy entry and grips side to side for locked in feel
- + Aluminum ratchets with stainless steel hardware for lightweight durability
- + Low profile ladder strap

Black: T.27.BNU.BAS.001
White: T.27.BNU.BAS.100
Violet: T.27.BNU.BAS.530
Public: T.27.BNU.TEF.100

SIZES:
S (7-9) / M (9.5-11) / L (11.5+)



BLACK



COLORWAYS



WHITE/BLACK



LAVENDER



PUBLIC



JOE SEXTON



 **PUBLIC**

[PUBLIC BASIN BINDING]

T.27.BNU.TEF.100

WINTER BOOTS





TM 2 XLT
CHRIS GRENIER

w²⁶/₂₇

A man with a beard and a brown beanie with 'THIRTYTWO' written on it is smiling. He is wearing a black t-shirt and a black sneaker with yellow accents. The background is orange with a white pattern. The sneaker is shown in a side profile view, featuring a black upper with grey mesh panels, yellow accents, and a black strap with a yellow checkered pattern. The 'thirtytwo' logo is visible on the side of the shoe.The Thirtytwo logo, consisting of a stylized '32' inside a square frame.

26/27 Boots Line Matrix - Mens

Star: Iconic 32 Models

SSSSS

SSSS

SSS

SS

SS

S

Soft

Medium

Stiff



LASHED XLT DB
Colors: 2
Fit: Performance XLT
Flex: Medium 6.5/10
Footbed: Elite
Closure: Boa

DESTROY COLLECTION



LASHED DB
Colors: 4 / 1 wide
Fit: Team
Flex: Medium 6/10
Footbed: Team
Closure: Boa

DESTROY COLLECTION



LASHED
Colors: 3
Fit: Team
Flex: Medium 6/10
Footbed: Team
Closure: Lace

DESTROY COLLECTION



LASHED HYBRID
Colors: 1
Fit: Team
Flex: Medium 6/10
Footbed: Team
Closure: Hybrid

DESTROY COLLECTION



STW DB
Colors: 4
Fit: Comfort
Flex: Soft 5/10
Footbed: Comfort
Closure: Double Boa

DESTROY COLLECTION



SHIFTY BOA
Colors: 3
Fit: Comfort
Flex: Soft 4/10
Footbed: Comfort
Closure: Boa

DESTROY COLLECTION



RECRUIT LACE
Colors: 2
Fit: Comfort
Flex: Soft 4/10
Footbed: Comfort
Closure: Lace

DESTROY COLLECTION



ZBI BOA
Colors: 2
Fit: Performance
Flex: Medium 7/10
Footbed: Performance
Closure: Boa / Strap

DESTROY COLLECTION



TM2 DB
Colors: 3 / 1 wide
Fit: Performance
Flex: Medium 7.5/10
Footbed: Performance
Closure: Double Boa

DESTROY COLLECTION



TM2
Colors: 3
Fit: Performance
Flex: Medium 7.5/10
Footbed: Performance
Closure: Lace

DESTROY COLLECTION



JONES MTB LITE
Colors: 1
Fit: Performance
Flex: Medium 8/10
Footbed: Elite
Closure: Lace

DESTROY COLLECTION



TM2 XLT GRENIER
Colors: 1
Fit: Performance XLT
Flex: Medium 8/10
Footbed: Elite
Closure: Double Boa

DESTROY COLLECTION



TM2 XLT
Colors: 1
Fit: Performance XLT
Flex: Medium 8/10
Footbed: Elite
Closure: Lace

DESTROY COLLECTION



FOCUS BOA SWEETIN
Colors: 1
Fit: Performance
Flex: Medium 10/10
Footbed: Performance
Closure: Double Boa

DESTROY COLLECTION



26/27 Boots Line Matrix - Womens

Star: Iconic 32 Models

SSSSS


SSSS

SSS

SS

SS


S



New Model ★

TM2 DB

Colors: 11
Fit: Performance
Flex: Medium 7.5/10
Footbed: Performance
Closure: Double Boa





★

LASHED DB

Colors: 5
Fit: Team
Flex: Medium 6/10
Footbed: Team
Closure: Boa

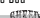




New Model ★

STW DB

Colors: 4
Fit: Comfort
Flex: Soft 5/10
Footbed: Comfort
Closure: Double Boa





New Model ★

SHIFTY BOA

Colors: 3
Fit: Comfort
Flex: Soft 4/10
Footbed: Comfort
Closure: Boa



Soft

Medium

Stiff

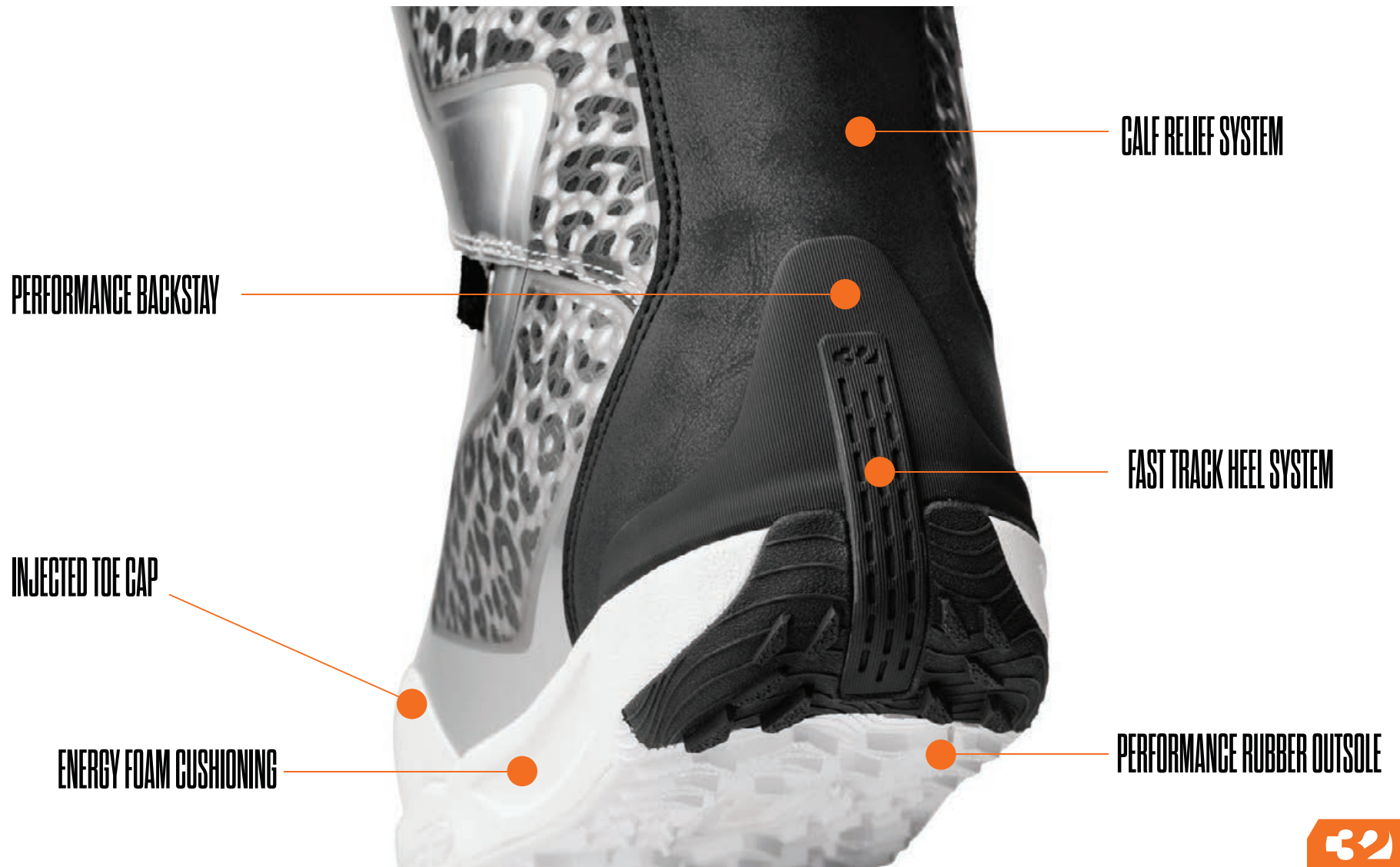


THE BEST FITTING BOOT FOR FASE BINDING SYSTEM. PERIOD.

Introducing the first FASE optimized boot outsole in the market. Engineered with a durable fast track rubber heel system, it grips the FASE AutoBack with pin point accuracy. Lock in and crank twice, you're off ripping and scoring more laps than ever before with trusted fit and comfort. The Thirtytwo compatible outsoles are revolutionizing the FASE experience.



CHECK THE TECH





FIT GUIDE

STIFF

MEDIUM

SOFT



PERFORMANCE

EXTRA DURABLE DUAL DENSITY INTUITION HEAT MOLDABLE FOAM LINER THAT MAXIMIZES SUPPORT AND STIFFNESS WHILE PROVIDING PERFECT COMFORT. MASSIVELY IMPROVED HEEL HOLD WITH NEW REVISED BACKSTAY CRADLE, ANKLE POCKETS AND THE HEEL HOLD KIT TO TIE IT ALL TOGETHER.



TEAM

THE TEAM FAVORITE WITH DUAL DENSITY INTUITION HEAT MOLDABLE FOAM LINER IN A MEDIUM FLEX PROFILE. MASSIVELY IMPROVED HEEL HOLD WITH NEW REVISED BACKSTAY CRADLE, ANKLE POCKETS AND THE HEEL HOLD SYSTEM TO TIE IT ALL TOGETHER.



COMFORT

SOFT FLEXING, HEAT MOLDABLE, EXTRA COMFORTABLE LINER NOW UPGRADED WITH A REVISED BACKSTAY FIT AND ANKLE POCKETS. STAY COMFORTABLE AND WARM ALL DAY LONG WITH OUR MICRO FLEECE LINED COMFORT FIT LINER.

PERFORMANCE XLT

*TM2 XLT *TM2 XLT GRENIER



PERFORMANCE LINER XLT

Heat Moldable Dual Density
Intuition Foam



ELITE FOOTBED

Molded Energy Foam with Heel Cradle &
Customizable Adaptive Arch Support



PERFORMANCE HARNESS

Built Taller For Additional Support,
Flexibility and Heel Hold

PERFORMANCE



PERFORMANCE LINER

Heat Moldable Dual Density
Intuition Foam



PERFORMANCE FOOTBED

Molded Evolution Foam with Heel
Cradle, Arch Support and Heel Cushioning



PERFORMANCE HARNESS

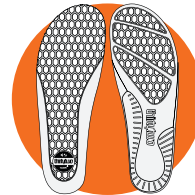
Built Taller For Additional Support,
Flexibility and Heel Hold

TEAM



TEAM LINER

Heat Moldable Dual Density
Intuition Foam



TEAM FOOTBED

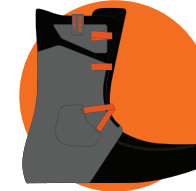
Molded Footbed with
Heel Cradle and Arch Support



TEAM HARNESS

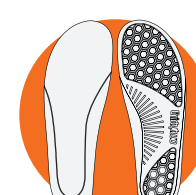
Standard Height with Medium
Support, High Flexibility and Heel Hold

COMFORT



COMFORT LINER

Heat Moldable Dual Density
Foam and Integrated Lacing



COMFORT FOOTBED

Molded Footbed



COMFORT HARNESS

Grip & Rip Heel Hold Velcro Heel
Overlay Prevents Heel Slippage



JONES MTB LITE

Designed by Jeremy Jones to be the ultimate mountain slayer. Improved fit with a Performance XLT liner, 32 Easy Lace loops, a quick release walk mode buckle and a zippered storm flap to keep you dry. An all new Michelin fiberlite outsole for insane grip, dual density midsole for the perfect balance of cushion and stability, with a carbon shank to tie it all together in the ultimate lightweight package.

* FEATURES +

- + "Quick Release" walk mode
- + Performance XLT Liner
- + Michelin Fiberlite Out sole,
- + Ultra lightweight carbon shank
- + Engineered out sole, slimmest profile in 32 line
- + STI Evolution Dual density energy foam mid sole
- + Easy-Lace loops
- + Locking lace hardware
- + Asymmetrical easy to use storm flap
- + Elite Internal Harness
- + Gaiter and Gaiter Lock
- + Articulated Cuff
- + Storm Shield
- + Heel Hold Kit
- + Recoil Flex Control
- + Performance Backstay
- + Heel cradle for crampon

BLACK: T.27.BTM.JML.BK

US: 6-13

EU: 39-46

UK: 5.5-12.5

Flex: 10/10

Fit: Performance XLT



BLACK



FOCUS BOA SWEETIN

Go bigger with the Focus BOA® Sweetin, the choice of all-terrain slayer Austen Sweetin. BOA® Fit System delivers micro-adjustable, precision fit, engineered to perform in the toughest conditions.

* FEATURES +

- + Michelin Fiberlite Outsole
- + ultra lightweight carbon shank
- + Engineered outsole slimmest profile in 32 line
- + STI Evolution Dual density energy foam midsole
- + 1:1 Lasting Dual-Zone
- + High Power Focus BOA Fit System with H5 Coiler
- + 3D Molded Tongue
- + Performance XLT liner with elite footbed
- + Performance Internal Harness
- + Gaiter Lock
- + Articulated Cuff
- + Molded Toe Cap
- + Performance Backstay
- + Exo Armor
- + Storm Shield
- + Heel Hold Kit
- + Recoil Flex Control
- + Heel cradle for crampon

BLACK T.27.BTM.FBS.BK

US: 6.5-13

EU: 39-46

UK: 6-12.5

Flex: 9/10

Fit: Performance XLT



Austen Sweetin
SWEETIN

BLACK



TM2 XLT BOA

The TM2 XLT is built to handle anything you throw at it—and then some. A trusted favorite of the team and the go-to choice for resort crews, this boot packs serious durability without the bulk. Featuring the lightweight yet tough thirtytwo outsole with heel stabilizer, it delivers unmatched grip and long-lasting performance. With a medium-stiff flex for maximum support, plus the locked-in security of Tongue Tension+ and a Power Strap, the TM2 XLT lets you charge with total confidence across every line and every condition.

* FEATURES +

- + 1:1 Lasting
- + Power Strap
- + Ultra grippy Thirtytwo outsole with heel stabilizer
- + Evolution Foam Cushioning
- + 3D Molded Tongue
- + Performance XLT liner
- + Elite footbed
- + Performance Internal Harness
- + Articulated Cuff
- + Performance Backstay
- + Heel Hold Kit
- + Injection Toe cap
- + Boa Model: Dual H5 Reels, Coiler on tongue

BLACK /YELLOW: T.27.BTM.TXG.GY

US: 6-13

EU: 39-46

UK: 5.5-12.5

Flex: 8/10

Fit: Performance XLT

CARIS GRENIER
GRENIER



BLACK / YELLOW



TM2 XLT

The TM2 XLT is built to handle anything you throw at it—and then some. A trusted favorite of the team and the go-to choice for resort crews, this boot packs serious durability without the bulk. Featuring the lightweight yet tough Thirtytwo outsole with heel stabilizer, it delivers unmatched grip and long-lasting performance. With a medium-stiff flex for maximum support, plus the locked-in security of Tongue Tension+ and a Power Strap, the TM2 XLT lets you charge with total confidence across every line and every condition.

* FEATURES +

- + 1:1 Lasting
- + Power Strap
- + Ultra grippy Thirtytwo outsole with heel stabilizer
- + Evolution Foam Cushioning
- + 3D Molded Tongue
- + Performance XLT liner
- + Elite footbed
- + Performance Internal Harness
- + Articulated Cuff
- + Performance Backstay
- + Heel Hold Kit
- + Injection Toe cap
- + EZ Slide lace loops
- + Locking lace hardware

BLACK / GREY: T.27.BTM.TMX.BK

US: 6-13

EU: 39-46

UK: 5.5-12.5

Flex: 8/10

Fit: Performance XLT



BLACK / GREY



Austin Vizz



LOOSEY
LOVES
IT

TME



TM2

VIZZ X LOOSEY

Straight out of another dimension, the TM-2 Double BOA—crafted in collaboration with Loosey and team rider Austin Vizz—lands as a true statement piece. Known as one of the most versatile boots in the lineup, the TM-2's balanced medium-stiff flex adapts to every style of riding, from park laps to backcountry missions. Right out of the box, comfort meets durability with ultra-soft Energy Foam cushioning and rugged overmolds placed exactly where you need them. Lock in the perfect fit with the H5 Dual BOA Fit System featuring TX3 laces, while the redesigned tongue cover keeps moisture out so you can ride dry and dialed all day.

* FEATURES +

- + 1:1 Lasting
- + Ultra grippy Thirtytwo outsole with heel stabilizer
- + Dual BOA Fit System
- + Performance Rubber Outsole
- + Energy Foam Cushioning
- + Overmold
- + 3D Molded Tongue
- + Performance Internal Harness
- + Articulated Cuff
- + Performance Backstay
- + Heel Hold Kit
- + Tongue Tension+
- + Injected toe cap
- + Calf Relief
- + Boa Model: Dual H5 Reels, Coiler on tongue
- + Lace model: EZ Slide lace loops
- + Lace model: Locking lace hardware

SILVER / WHITE: T.27.BTM.TVL.WH

US: 5-13

EU: 37-46

UK: 4-12.5

Flex: 7.5/10

Fit: Performance

VISINTAINER
Loosey



SILVER / WHITE - LACE



SILVER / WHITE - BOA



TM2

SCOTT STEVENS

This pro colorway for Scott Stevens may be hard to see at first, but we promise it's there! Offered in both BOA and traditional lace systems, the TM-2 is your team rider's workhorse boot. The TM-2's balanced medium-stiff flex it's built to handle any riding style with ease. A perfect fit straight out of the box, the TM-2 delivers lasting comfort and durability thanks to ultra-soft Energy Foam cushioning and protective overmolds right where you need them.

* FEATURES +

- + 1:1 Lasting
- + Ultra grippy Thirtytwo outsole with heel stabilizer
- + Energy Foam Cushioning
- + Overmold
- + 3D ELITE FLEX Tongue
- + Performance Internal Harness
- + Tongue Tension+
- + Articulated Cuff
- + Performance Backstay
- + Heel HoldKit
- + Calf Relief
- + Injected Toe Cap
- + Boa Model: Dual H5 Reels, Coiler on tongue
- + Lace model: EZ Slide lace loops
- + Lace model: Locking lace hardware

CAMO / BLACK; T.27.BTM.TMS.NC

US: 5-14

EU: 37-48

UK: 4-13

Flex: 7.5/10

Fit: Performance



CAMO / BLACK - LACE



CAMO / BLACK - BOA



TM2 BOA
BOA WIDE
LACE

The TM-2 sets the standard for reliability, available in BOA, wide-foot BOA, and traditional lace options. A longtime team favorite, it's the most versatile boot in the lineup—ready for any rider, any style, any day. The TM-2's balanced medium-stiff flex delivers the perfect blend of support and freedom, making it equally at home in the park or on the steeps. Right out of the box, you'll get all-day comfort from plush Energy Foam cushioning and reinforced durability thanks to protective overmolds placed exactly where they count.

* FEATURES +

- + 1:1 Lasting
- + Ultra grippy Thirtytwo Outsole with heel stabilizer
- + Energy Foam Cushioning
- + Overmold
- + 3D ELITE FLEX Tongue
- + Performance Internal Harness
- + Tongue Tension+
- + Articulated Cuff
- + Performance Backstay
- + Heel Hold Kit
- + Calf Relief
- + Injected Toe Cap
- + Boa Model: Dual H5 Reels, Coiler on tongue
- + Lace model: EZ Slide lace loops
- + Lace model: Locking lace hardware

BLACK: T.27.BTM.TMX.BK

US: 5-14

EU: 37-48

UK: 4-13

Flex: 7.5/10

Fit: Performance



BLACK - LACE



BLACK - BOA WIDE



BLACK - BOA



ZB-1 ZEB POWELL

Zeb Powell's riding is all about raw power and unstoppable confidence—and the new ZB1 boot captures that same energy. Built with a fun, responsive flex, its fully injection-molded tongue delivers smooth control and consistent feel every run. The innovative Power Strap System locks you in with rock-solid security you can trust no matter the conditions. Underfoot, the ultra-stable outsole and heat-moldable liner combine for precision grip, lasting comfort, and total control across any terrain.

* FEATURES +

- + NEW Hybrid BOA / Power Strap system
- + 1:1 Lasting
- + 3D ELITE FLEX Tongue
- + Performance Liner
- + Energy Foam Cushioning
- + Performance Internal Harness
- + Articulated Cuff
- + Performance Backstay
- + Heel Hold Kit

BLACK/RED: T.27.BTM.ZOB.BK
CREME / BROWN: T.27.OZM.ZOB.NC

US: 6-14
EU: 39-48
UK: 5.5-13

Flex: 7/10

Fit: Performance



BLACK /RED



CREME / BROWN



LASHED XLT DB

The Lashed XLT Double BOA brings balance and support together in a medium-flex package built for all-day riding. Enhanced liner fit keeps your foot locked in, while the Dual BOA Fit System with progressive TX3 laces dials in precision control on the fly. Underfoot, the Performance Rubber Outsole and Evolution Foam cushioning absorb every impact, and the updated tongue cover keeps the elements out so you stay dry, comfortable, and focused on the ride.

* FEATURES +

- + H5 Coiler on tongue
- + Power strap
- + 1:1 Lasting
- + 3D Molded Tongue
- + Performance Liner
- + Energy Foam Cushioning
- + Performance Internal Harness
- + Articulated Cuff
- + Performance Backstay
- + Heel Hold Kit
- + Enhanced thirtytwo team outsole

RED: T.27.BTM.LXD.RD
BLACK: T.27.BTM.LXD.BK

US: 6-13
EU: 39-46
UK: 5.5-12.5

Flex: 6.5/10

Fit: Performance XLT



RED



BLACK



LASHED

DOUBLE BOA
DOUBLE BOA WIDE
LACE

The Lashed is a true hall-of-famer in the ThirtyTwo lineup. A longtime team favorite, it delivers the perfect balance of medium flex, support, and enhanced liner fit for riders who demand consistency. This season, heavy-hitters Pat Fava and Chris Bradshaw return with fresh new colorways. Add in the Performance Rubber Outsole, plush Evolution Foam cushioning, and a weather-blocking tongue cover, and you've got a boot built to keep you dry, comfortable, and charging from first chair to last lap.

FEATURES +

- + 1:1 Lasting
- + Snow Guard Tongue Cover
- + Performance Rubber Outsole
- + Evolution Foam Cushioning
- + 3D Molded Tongue
- + Team Internal Harness
- + Articulated Cuff
- + Independent Eyestay
- + Performance Backstay
- + Heel Hold Kit
- + Calf Relief
- + Boa Model: H5 Coiler on tongue
- + Lace model: EZ Slide lace loops
- + Lace model: Locking lace hardware

FAVA WHITE: T.27.BTM.LSF.WH
BLACK/GUM: T.27.BTM.LSH.BK
BRADSHAW - BROWN/BLACK: T.27.BTM.LSB.BN

US: 5-14
EU: 37-48
UK: 4-13

Flex: 6/10

Fit: Team



FAVA - WHITE - LACE



BLACK/GUM

LACE WIDE BOA BOA



BRADSHAW - BROWN/BLACK

BRADSHAW

LACE BOA



FAVA - WHITE

BOA



LASHED HYBRID

The Lashed Hybrid is built to perform, combining balanced medium flex, reliable support, and an enhanced liner fit. Its hybrid Lace + BOA system featuring internal and external adjustments lets you dial in the perfect fit on the fly. With a Performance Rubber Outsole, Evolution Foam cushioning, and a new tongue cover, this boot keeps you dry, comfortable, and in control all day long.

* FEATURES +

- + 1:1 Lasting
- + Hybrid lacing and BOA® Fit System with H5 reel
- + Snow Guard Tongue Cover
- + Performance Rubber Outsole
- + Evolution Foam Cushioning
- + 3D Molded Tongue
- + Team Internal Harness
- + Articulated Cuff
- + Independent Eyestay
- + Performance Backstay
- + Heel Hold Kit
- + Calf Relief

BLACK / GUM: T.27.BTM.LHY.BK

US: 5-14

EU: 37-48

UK: 4-13

Flex: 6/10

Fit: Team



BLACK / GUM



LASHED DB

In collaboration with Volcom, the team-approved and ready to ride Lashed Double BOA delivers balanced medium flex, all-day comfort, and locked-in support. Dual BOA TX3 laces dial your fit perfectly, while the Performance Rubber Outsole, Evolution Foam cushioning, and moisture-blocking tongue cover keep you dry and in control from first chair to last lap.

* FEATURES +

- + 1:1 Lasting
- + Dual-Zone BOA® Fit System with H5 Coiler
- + Snow Guard Tongue Cover
- + Performance Rubber Outsole
- + Evolution Foam Cushioning
- + 3D Molded Tongue
- + Team Internal Harness
- + Articulated Cuff
- + Independent Eyestay
- + Performance Backstay
- + Heel Hold Kit
- + Calf Relief

BLACK / WHITE: T.27.BTM.LDV.BK

US: 5-14

EU: 37-48

UK: 4-13

Flex: 6/10

Fit: Team



VOLCOM

BLACK / WHITE



STW DB

This year's STW Double BOA got a style boost from team rider Joe Sexton, and the results speak for themselves. The Public Snowboards collaboration in raw edge black denim joins the trusted STW lineup, built for all-day comfort and performance. With a cushy Comfort Tongue, soft Evolution Foam midsole, and plush Comfort Fit liner, this boot feels like a pillow on your feet—ready to carry you from first chair to last lap with ease.

* FEATURES +

- + 1:1 Lasting
- + Dual-Zone BOA® Fit System, H5 coiler on tongue
- + Performance Rubber Outsole
- + Evolution Foam Cushioning
- + 3D Molded Tongue
- + Integrated Internal Lacing
- + Grip & Rip Heel Hold

BLACK DENIM: T.27.BTM.SDP.BD
 White / Black: T.27.BTM.SWD.WH
 BLACK / BLACK: T.27.BTM.SWD.BK
 BROWN / GREY: T.27.BTM.SWD.BN

US: 5-14
 EU: 37-48
 UK: 4-13

Flex: 5/10

Fit: Comfort



PUBLIC - BLACK DENIM



WHITE / BLACK



BLACK / BLACK



BROWN / GRAY



SHIFTY / RECRUIT

The name of the game is all-day comfort with the Shifty / Recruit. Offered in a single Boa system as the Shifty and traditional lace as the Recruit the preference is up to you. Designed with an ultra-soft interior, it pampers your feet with a cushy Comfort Tongue, soft Evolution Foam midsole, and plush Comfort Fit liner. Easy to step into and effortless to ride, this boot is perfect for anyone seeking maximum comfort without compromise.

* FEATURES +

- + BOA Fit System With H5 Coiler
- + Rubber outsole, Evolution Foam Midsole
- + Comfort Tongue
- + Integrated Internal Lacing
- + Grip & Rip Heel Hold

GREEN: T.27.BTM.STB.GN
 WHITE / GREY: T.27.BTM.STB.WH
 BLACK: T.27.BTM.SWD.BK

US: 5-14
 EU: 37-48
 UK: 4-13

Flex: 4/10

Fit: Comfort



SHIFTY - GREEN - BOA



WHITE / GRAY

SHIFTY - BOA RECRUIT - LACE



BLACK

SHIFTY - BOA RECRUIT - LACE



YOUTH - LASHED

All the performance of an adult boot, sized just right for young riders. The Youth Lashed BOA gets your groms on the hill fast, letting them charge down runs with confidence thanks to the easy-to-use BOA Fit System.

* FEATURES +

- + 1:1 Lasting
- + BOA Fit System
- + Evolution Foam Outsole
- + Comfy Tongue
- + Integrated Internal Lacing
- + Grip & Rip Heel Hold

BLACK: T.27.BTU.YLB.BK

US: 10-60

EU: 16-22

UK: .5-5.5

Flex: 4/10

Fit: Comfort



BLACK



KIDS BOA

The perfect first boot for young riders making their on-hill debut. Comfort and ease of use take center stage with the Kids BOA Boot, giving groms all the features and thoughtful design of adult models. Built to set the foundation for tomorrow's shredders, it's the ideal way to get them confident and having fun from their very first run.

* FEATURES +

- + 1:1 Lasting
- + BOA Fit System
- + Evolution Foam Outsole
- + Comfy Tongue
- + Grow With Me

BLACK: T.27.BTU.KDB.BK

US: 1C-6C

EU: 16-22

UK: .5-5.5

Flex: 3/10

Fit: Comfort



BLACK





WOMEN'S LASHED
JAYLEN HANSON

w²⁶/₂₇





W-TM2 DB

The TM-2's balanced medium-stiff flex adapts to every style of riding, from park laps to backcountry missions. Right out of the box, comfort meets durability with ultra-soft Energy Foam cushioning and rugged overmolds placed exactly where you need them. The cozy fleece liner adds an additional layer of confident comfort. Lock in the perfect fit with the Elite Flex injection molded tongue, H5 dual BOA fit system, and a redesigned tongue cover to keep you riding dry and dialed all day.

* FEATURES +

- + 1:1 Lasting
- + Ultra grippy Thirtytwo outsole with heel stabilizer
- + Dual BOA Fit System
- + Performance Rubber Outsole
- + Energy Foam Cushioning
- + Overmold
- + 3D ELITE FLEX tongue
- + Performance Internal Harness
- + Articulated Cuff
- + Performance Backstay
- + Heel Hold Kit
- + Injected toe cap

BLACK: T.27.BTW.TDW.BK

US: Ws 5-10

EU: Ws 37-48

UK: Ws 4-13

Flex: 7.5/10

Fit: Performance



BLACK



W-LASHED DB

The Lashed Double Boa is a team favorite with well balanced medium flex, support, enhanced liner fit and the added benefit of the Dual BOA fit system featuring H5 coiler on the tongue. With Performance Rubber Outsole, Evolution Foam Cushioning and a new tongue cover to keep you dry.

* FEATURES +

- + 1:1 Lasting
- + Ultra grippy performance rubber Thirtytwo outsole
- + Dual Boa fit system with H5 coiler on tongue
- + Energy Foam Cushioning
- + 3D Molded Tongue
- + Team internal Harness
- + Articulated Cuff
- + Performance Backstay
- + Heel Hold Kit

PINK: T.27.BTW.LDW.PK
BROWN / CAMO: T.27.BTW.LSW.BN
MARSHMALLOW: T.27.BTW.LDW.NC
BLACK / GOLD: T.27.BTW.LSW.BK

US: Ws 5-10
EU: Ws 37-48
UK: Ws 4-13

Flex: 6/10

Fit: Team



PINK / BLACK



BROWN / CAMO



MARSHMALLOW



BLACK / GOLD



W-LASHED DB

In collaboration with Volcom, the team-approved and ready to ride Lashed Double BOA delivers balanced medium flex, all-day comfort, and locked-in support. Dual BOA with H5 Coiler on tongue dial your fit perfectly, while the Performance Rubber Outsole, Evolution Foam cushioning, and moisture-blocking tongue cover keep you dry and in control from first chair to last lap.

* FEATURES +

- + 1:1 Lasting
- + Dual-Zone BOA Fit System with H5 Coiler
- + Snow Guard Tongue Cover
- + Ultra grippy performance rubber Thirtytwo outsole
- + Evolution Foam Cushioning
- + 3D Molded Tongue
- + Team Internal Harness
- + Articulated Cuff
- + Independent Eyestay
- + Performance Backstay
- + Heel Hold Kit
- + Calf Relief

BLACK / WHITE: T.27.BTW.DWV.BK

US: Ws 5-10
EU: Ws 37-48
UK: 4-13

Flex: 5/10

Fit: Team



BLACK / WHITE



W-STW DB

The STW Double BOA joins the women's lineup, built for all-day comfort and performance. With a cushy Comfort Tongue, soft Evolution Foam midsole, full rubber outsole, and plush Comfort Fit liner. This boot feels like a pillow on your feet, ready to carry you from first chair to last lap with ease.

* FEATURES +

- + 1:1 Lasting
- + Dual-Zone BOA Fit System
- + Performance Rubber Outsole
- + Evolution Foam Cushioning
- + 3D Molded Tongue
- + Integrated Internal Lacing
- + Grip & Rip Heel Hold

TAN / BLUE: TT.27.BTW.SLA.BN
 BROWN: T.27.BTW.SDW.BN
 LIGHT GREY: T.27.BTW.SDW.GY
 BLACK: T.27.BTW.SDW.BK

US: Ws 5-10
 EU: Ws 37-48
 UK: Ws 4-13

Flex: 5/10

Fit: Comfort



TAN / BLUE



BROWN



LIGHT GREY



BLACK



W-SHIFTY

The name of the game is all-day comfort with the Shifty. Offered in a single Boa system the Shifty is designed with an ultra-soft interior. It pampers your feet with a cushy Comfort Tongue, soft Evolution Foam outsole, and plush Comfort Fit liner. Easy to step into and effortless to ride, this boot is perfect for anyone seeking maximum comfort without compromise.

* FEATURES +

- + BOA Fit System With H5 Coiler
- + Rubber and Evolution Foam Outsole
- + Comfort Tongue
- + Integrated Internal Lacing
- + Grip & Rip Heel Hold

PINK: T.27.BTW.SBW.PK
MARSHMALLOW: T.27.BTW.SBW.NC
BLACK: T.27.BTW.SBW.BK

US: Ws 5-10
EU: Ws 37-48
UK: Ws 4-13

Flex: 4/10

Fit: Comfort



LIGHT LAVENDER



MARSHMALLOW



BLACK

ATT
AIR





LOUNGER

The lounge is your go to après footwear. This cozy yet rugged slipper keeps you cozy in the lodge and on the quick run to the car. The collapsible heel offers a slide in option while the elastic heel cup offers more support when needed.

FEATURES +

- + 1:1 Lasting
- + Rubber outsole
- + Extra thick Evolution Foam Midsole
- + Cozy Cuff Lined
- + High Quality Foam Insulation
- + Weather Resistant Upper
- + Fold Down Heel

Black/White: T.26.BTM.LGR.BK
Volcom: T.26.BTM.TLV.BK

US: 5-14



VOLCOM



BLACK / WHITE



MOON WALKER

The Moon Walker is your go to off hill truder. This durable yet comfy boot keeps you warm and dry when traveling through weather and terrain. The cozy cuff and foam insulation contains warmth while the water resistant upper keeps you dry.

* FEATURES +

- + 1:1 Lasting
- + Performance Rubber Outsole
- + Evolution Foam Cushioning
- + Cozy Cuff Lined
- + High Quality Foam Insulation
- + Weather Resistant Upper

VOLCOM: T.26.BTM.MW.BK
BLACK/WHITE: T.26.B1M.MNW.BK

US: 5-14



VOLCOM



BLACK / WHITE



THE T32M

32 Boards, Boots, Bindings & Outerwear Team

Pat Fava
Patrick Hofmann
Brin Alexander
Phil Hansen

32 Boots, Bindings and Outerwear Team

Scott Stevens
Chris Bradshaw
Jack McDougale
Ellie Weiler

32 Boots & Outerwear Team

JP Walker
Chris Grenier
Toni Kerkela
Joey Fava
Austin Visintainer
Mike Liddle
Jaylen Hanson
Jib Girl / Dangy - Danyele Patterson
Stefi Luxton

32 Boots & Bindings

Joe Sexton
Scott Blum
Cody Warble

32 Boots & Gloves

Zeb Powell
Halldor Helgason

32 Boots

Jeremy Jones
Austen Sweetin
Desiree Melancon
Bode Merrill
Benny Milam